

The Belleville Times

News

Belleville a Second Class Mailing, April 14, 1941 at the Post Office at Newark, N. J., under the act of March 3, 1979.

BELLEVILLE, N. J., FRIDAY, MARCH 25, 1955

Belleville's Independent
Hometown Newspaper
Subscription \$2 A Year

5c per copy

Vol. 30, No. 37

TOWN WILL JOIN APPEAL AGAINST COUNTY TAX TABLE

144 Per Cent Increase
In "True" Value Sets
Property At \$109,478.620

The town commission this week in a caucus session decided to link with other municipalities appealing the change in the assessment equalization table of the County Board of Taxation, permitting a \$2,500 item to cover the town's share of the appeal fund.

Altogether 13 municipalities in Essex have raised a "war fund" of \$25,000.

In the equalization table published by the County Tax Board, Belleville's true value of assessable property was set at \$109,478.620.

The same property is carried on the tax rolls at \$4,807,900. The increase is 144 per cent.

The appointment of costs of the appeal, for the town, was set at \$2,500.

Bloomfield \$4,280, Glen Ridge \$800, Irvington \$4,125, Livingston \$1,200, Maplewood \$2,450, Orange \$2,450, Verona \$1,075, West Caldwell \$600, West Orange \$3,176, Millbury \$2,375 and Roseland \$200.

At a conference in Newark, Monday, at which twelve municipalities were present, the State Board, Herbert Hancock, a West Essex town attorney, was designated to handle the case.

At the Monday meeting, the municipalities also discussed the possibility of a suit for an injunction but decided, instead, to waive that action in favor of the appeal.

Although only twelve municipalities agreed, at Monday's meeting, to underwrite the costs and to proceed with the appeal, four others, including the town, were expected to join later. The delegates were unable to commit those municipalities to the appeal.

Several towns, such as Montclair and East Orange, however, declined to join the appeal.

(Continued On Page Two)

THOUSANDS SEE DEWITT BUILDING OPEN HOUSE

Skies Are Sunny As People
Stream Into Modern Structure,
Inspect Conveniences

More than 4,000 people flocked in to see the new De Witt Savings and Loan Association building at 463 Washington Avenue last Saturday.

Encouraged by sunny skies, the crowds streamed in all day long to see the facilities, which include a walk-up teller window at which mothers with baby carriages can bank from the street, a drive-in window for motorists, and a spacious, decorator-designed interior.

Joseph King, president, announced that the posting machines registered more than 20,000 transactions for the day, with about 750 made by people who owned new savings accounts.

While all visitors received free souvenirs of the occasion, those who started accounts with \$10 or more received special gifts of a well-known set of two pens.

This program proved so popular that King announced it will continue to be given to new savers for as long as supplies last.

"Savings accounts are insured at DeWitt up to \$10,000, with substantial dividends—paid twice yearly, the association said. Other services offered by the association include travelers' cheques, money orders, mortgage loans, home loans, and G.I. home loans.

It occupies a tower on the site of the present church, dedicated in 1944 to the men and women of the congregation who served in the Armed Forces. The bell was partially destroyed by fire in 1930, but Mrs. Raymond Smith had it reset as a memorial to her mother, Mrs. H. S. Cornell.

of the new De Witt building last week is pictured here, in scene typical throughout the day when hundreds attended the first-day ceremonies. That's



ARCHITECT'S SKETCH . . . of the new, \$100,000 Christ Episcopal Church to be constructed here. During a 10-day canvass, \$70,000 in pledges was collected for the building fund. A dinner tonight at the parish house will be held for the workers who participated in the drive.

MILK BAR IN JORALEMON SEEN UNLIKELY

"Health Hazard, Property
Devalued," Argued By Ebert,
After Zoning Board Approval

Construction of a milk bar at 638 Joralemon Street apparently will not be permitted.

The Town Commission this week informally opposed the zoning board's granting a variance for the bar, after hearing from Joseph Ebert of 13 Harvard Place.

Ebert, whose home, along with other residents' homes would look up to the Joralemon Street property, offered his arguments at a conference meeting preceding the regular Commission meeting here Tuesday.

"It's all right for the highway," he said at one point, in reference to the milk bar, "but when we purchased we had no thought of such a business."

The zoning matter will come up officially before the Commission at its next meeting April 12. The Commission has yet to get the zone board's formal notice.

Ebert, representing other residents in the area, including eight in the audience, said the milk bar would devalue property, would result in a traffic hazard for the children.

He said the bar would be open late at night and that lights would flood the windows. He said Harvard Place was a quiet street now and that a peddling with 38 names and that such a business had been presented to the zoning board.

(Continued On Page Two)

CHURCH BELL RINGS ANGELUS

A bell more than 200 years old, cast for the first Christ Episcopal Church on Main Street in 1761, rings out the Angelus each evening at 6, calling all within hearing to prayer.

The bell, a unique traditional prayer at sunset was suggested at the Christ Church loyalty dinner held March 14 at the start of a fund raising campaign for a new church. Parishioners were asked to pray for the success of the campaign at the pealing of the bell.

It occupies a tower on the site of the present church, dedicated in 1944 to the men and women of the congregation who served in the Armed Forces. The bell was partially destroyed by fire in 1930, but Mrs. Raymond Smith had it reset as a memorial to her mother, Mrs. H. S. Cornell.

of the new De Witt building last week is pictured here, in scene typical throughout the day when hundreds attended the first-day ceremonies. That's

Belleville Players Form Little Theater Company

The Belleville Players, an amateur theatrical group, has been organized in town under the sponsorship of Mr. and Mrs. Morgan Dring and Mr. and Mrs. Frederick Schroeder.

An invitation is extended to all adults interested in amateur acting to join the group which numbers 15 members thus far.

At a meeting held Tuesday at the Recreation House, plans were outlined for the production of one-act plays for Parents-Teachers Associations and similar groups planning entertainment or benefits.

Until the membership increases, rehearsals will be held in the homes of cast members and a monthly business meeting will take place at the Recreation House.

Members include Mr. and Mrs. Sam Genneman, Mr. and Mrs. Herb Zein, Miss Ginger MacGillivray, Miss Millie Venezia, Mrs. George Fischer, Mrs. William Frey, Mr. and Mrs. August Arvedson, and Mr. and Mrs. Alex Gligorist.

Mr. Dring is president; Mrs. Schroeder, vice-president; Mrs. Dring, secretary and Mr. Schroeder, treasurer.

Golden, citing "loose unbusinesslike practices," urged proper authorization by the Commission of accounts.

Referring specifically to the trial in which Hugh Welsh, administrative clerk in the public works department was acquitted of a conspiracy indictment, Golden said that testimony showed that money was borrowed from one account to help another, without proper authorization and that one voucher was admitted to be "false."

Citing another instance, Golden said that in the recent Kierman Funeral Home trial, it was brought out that there was no official town map because the Commission had never instructed Town Engineer Matthew Sheehan to prepare such a map.

The map was made a talking point at the trial. Town Attorney Lawrence Keenan conceded there was no official town map, as such, but pointed out that a map was adopted in 1923 and that he had witnessed the legal advertisement setting up the zoning regulations.

Amvet Post 26 Plans
Dinner-Dance Sunday

A dinner-dance will be held Sunday night in the Menck town brook in Cedar Grove, by Amvet Post 26, Commander Jack Franzl said yesterday. The affair, tenth annual dinner-dance of the post, will begin at 8 p.m.

Franzl said invitations had been sent to Congressman Peter Rodino and to town commissioners. Michael Morotti is chairman of the ticket committee with Louis Bunnery, Plant manager, and Chris Gasta and Franzl members.

An ordinance providing for buying street equipment including a front end loader and backhoe combination, a new vacuum leaf loader, and a new motor pick-up sweep, was introduced by the Town Commission this week.

The commission appropriated \$24,500 for the purchase and authorized issuance of anticipation notes.

Commissioner Kenneth Smith said yesterday the new sweeper would replace the present sweeper which he estimated at 10 years old. He said the town's old sweeper would be rebuilt and cited a \$560 maintenance cost the town spent last year in repairs. He pointed out

(Continued On Page Two)

Thieves Steal Tools,
Equipment In Two Plants

The Perma Co. and the Stanley-Lambert Co. were broken into over the weekend, police reported.

Thieves took \$510 worth of power tools from the Perma plant in Mill Street, according to Louis Bunnery, Plant manager, after removing a window on the east side of the building.

They took a typewriter and a half box of papers from an office in the Lambert company.

Eight Street, according to Shney Greenberg, a partner. Greenberg said they got in by forcing a

DISCUSS PLANS FOR POLIO VACCINATIONS

First And Second Grade
Children In Public, Parochial
Schools Could Have Benefit

Plans for vaccinating first and second grade children from all public and parochial schools here for polio were discussed at a meeting Monday at the Glen Ridge High School, attended by Eugene Berry, Health Officer, Evan H. Thomas, Superintendent of Schools, and Mrs. Herbert Orth and Mrs. Maude Cory, co-chairman of the local vaccine committee.

Preliminary plans for administration of the Salk poliovaccines before school openings in June were discussed by William Twitchell, Essex County Schools Superintendent, and Dr. James E. Jeterman, New Jersey Regional Health Director.

Plans for additional meetings are in progress so details of the method of administration be drawn up and thoroughly understood.

It is expected that forms to be signed by parents will be issued shortly to be returned to the proper authorities. No child will be injected without the signed request of parents or guardians.

"We don't know yet that the vaccine is effective and that it will be licensed by the United States Public Health Service, but we cannot afford to wait for these things in making our plans," Twitchell said.

"In order for our children to benefit from the polio prevention, we must be fully prepared to begin inoculations as soon as the material is licensed and shipments received, if injections are to be completed before schools close in June," he said.

Four Lots For Sale

The town commission this week adopted a resolution permitting the sale of four lots at 60-66 Mary Street to the highest bidder with a minimum price of \$500.

Residents were urged this week to check on Red Cross workers seeking house-to-house donations.

Dr. Frank Durkin, campaign chairman, said some collectors have reported that someone other than certified collectors are calling at homes.

Be sure to give to the workers with the Red Cross kit, and one who gives a receipt for the money, he said.

REGULAR GOP SAYS
"SPLINTER GROUP"
BIDS FOR POWER

"Move To Take Control Of Clean Government," Says Russell, Anton And Magee; "Regrettable"

Senator Mark Anton, County Register Abbie W. Magee and Freeholder Elwood P. Russell, of Belleville, candidates for nomination at the April 19 Primary on the Regular Republican ticket, declared today the major issue in the primary campaign represents a move by a "splinter group" to take over control of the Clean Government organization.

In a joint statement today Senator Anton, Mrs. Magee and Mr. Russell said:

"It is regrettable that a small group of politically ambitious men have been able to fit to challenge the Regular Republican ticket at a time when harmony and unity are so desperately needed."

The Regular Republican ticket was selected under leadership

(Continued On Page Two)

HOT NEWS OFF
POLICE BLOTTER

Robert Mess, 15, of 60 Preston Terrace, was located last week in Toledo, O., after a missing persons alarm had been broadcast by police, according to Detective Harry Windfall. The son of Mr. and Mrs. Robert Mess, he left home after a family squabble, announcing he was not going to school, police said.

Mr. Korkowski, owner of the Malone Sweet Shoppe, at 477 Washington Avenue, told police 800 worth of magazines were stolen from it from his store.

Postmaster John Kant reported a mail carrier was bitten by a dog on the corner of Third and 222 Brighton Avenue.

(Continued On Page Two)

Group Urges Board Put Off Referendum

"Conscious Of Need But Plans Are Architect's Pipe Dream That May Be A War Nightmare," Says Riviera Park Unit; Hit Site, "Showplace" Plans

The first public opposition to the proposed new high school here was made this week.

In two letters, one to Mrs. Edward Rochau, Board of Education president, the Riviera Park Association urged the Board to postpone its referendum.

"We are fully conscious of the need for extending and enlarging the Belleville school plant," the Association executive committee wrote, "but we feel, however, that the

plans for the new high school are an architect's pipe-dream that easily may turn into an 'A'-war nightmare."

The Board of Education has set April 26 as the date for a special election. Three questions will be on the ballot: one approval or rejection of the board's proposed new high, estimated at \$3,531,218; another will be approval or denial of \$100,000, and start with an addition to Schools 8 and 7, estimated at \$743,631,860.

The Riviera Park executive committee in its communication, said also: "The site on which the new high school is proposed to be erected is unsuitable; it does not permit the construction of subterranean shelters which in our opinion are an absolute necessity."

"Start From Scratch

"The Board could do nothing better in the public interest but admit its past failure to entertain the objections raised above, cut its losses by paying the architect's fee of \$10,000, and start from scratch with a better suited site in mind and with plans for a less lavish 'showplace' high school, but one better suited for the actual needs of Belleville's growing generation and more in keeping with financial realities."

The letter was signed, Louis J. Donato, president and Martin Resnick, secretary.

Mrs. Edward Rochau, board president, said she had not yet received any of the letters.

Its introduction read:

"Without prejudice to the unanimous point of view of the Association's membership, with which you already have been made acquainted through a letter to Mrs. Rochau, the RPAC executive committee feels it incumbent upon itself to add to said letter the following observations reflecting the collective and unanimous opinion of the RPAC executive committee."

In the first letter, said directly to Mrs. Rochau, the RPAC membership urged the president to seek state or federal aid for the building.

"During such aid, if available," the RPAC said, "may take some time, a factor which raises the additional problem whether or not the referendum on the board's building program should not be postponed for some months until all these questions are thoroughly ventilated and cleared up in public."

(Continued On Page Two)

St. Anthony's Bingo;
Ahavas Achim Raffle

Two religious groups figured in resolutions adopted by the Town Commission this week.

The Ahavas Achim was granted permission to hold a raffle June 20.

St. Anthony's Church was granted permission to change its Friday night bingo to a regular night of games for their Friday Night Bingos, in which there is \$1,000 in prizes.

The resignation includes four "early bird specials" from \$5 to \$20 and one big game prize of \$225.

Slash Sale Of Trashy Books Here

But "Indecent" Literature
Still Difficult Problem
For News Dealers

By Regina Smardize

The sale of obscene and sadistic literature in many news stands here is being cracked down upon by the Legion of Decency committee of St. Peter's Roman Catholic church.

To stamp out the sale of matter members of the Legion committee monthly the cooperation of proprietors in removing the objectionable material from their racks, who in turn, are awarded certificates to be displayed in their establishments.

The Legion of Decency, a long criticized by juvenile court authorities and legislative committees as contributing to delinquency, the comic book industry recently imposed upon itself a code of ownership and self-regulation to remove much of the brutality and wickedness from the pages.

In its annual report to the Joint Legislative Committee, to Study the Publication of Comics, a New York State group, praised the code set by the Comic Magazines Publishers Association, and the admin-

(Continued On Page Two)

TYPICAL OF . . . the many hundreds of books and magazine given to proprietors by newsdealers with their regular book and publications

IT'S OFFICIAL; COOK NAMED REC SUPERINTENDENT



Robert E. Cook was appointed Recreation Superintendent of Recreation this week by Commissioner Elnor Hyde. Cook held the job in an acting capacity since November 1952.

Cook was named after he received word from Civil Service that he had passed the examination for the recreation post, with a first rank. He took the exam in October, 1954.

The recreation superintendent lives at 95 Tappan Avenue, with his wife Norma and their two children, Bonnie Claire, 8 and Robert Elliott, 15 months.

COUNTY COMMISSIONER
ASPIRANTS LISTED
IN APRIL PRIMARY

Democratic Chairman
Replicates To Challenge
Of Party Leadership

Town Democratic Chairman Ralph Vera this week answered criticism of his leadership last week by Philip Newsome.

Vera's answer is printed in full in the letters to the editor column on the editorial page.

Besides those five districts in which there are Democratic contests for county committee posts, and one district in which there is a Republican contest, others seeking nomination in the primary election to be held next month are as follows:

Democratic county committee members to be elected: First Ward - Frank Simeone and Dorothy Estelle; John T. Costello

(Continued On Page Two)

Will Honor Chief White
At Dinner In April

Fire Chief Harry White will be honored with a testimonial dinner April 14 at 8 p.m. at the Town Club. White was promoted with the department for more than 20 years.

Capital Card Welfare League in charge of the fund-raising arrangements for the affair. The committee said there would be entertainment.

(Continued On Page Two)

THIEVES STEAL TOOLS,
EQUIPMENT IN TWO PLANTS

The Perma Co. and the Stanley-Lambert Co. were broken into over the weekend, police reported.

Thieves took \$510 worth of power tools from the Perma plant in Mill Street, according to Louis Bunnery, Plant manager, after removing a window on the east side of the building.

They took a typewriter and a half box of papers from an office in the Lambert company.

Eight Street, according to Shney Greenberg, a partner. Greenberg said they got in by forcing a

(Continued On Page Two)

THIEVES STEAL TOOLS,
EQUIPMENT IN TWO PLANTS

The Perma Co. and the Stanley-Lambert Co. were broken into over the weekend, police reported.

Thieves took \$510 worth of power tools from the Perma plant in Mill Street, according to Louis Bunnery, Plant manager, after removing a window on the east side of the building.

They took a typewriter and a half box of papers from an office in the Lambert company.

Eight Street, according to Shney Greenberg, a partner. Greenberg said they got in by forcing a

(Continued On Page Two)

RED CROSS MOVES TO NEW LOCATION

The Belleville Chapter, American Red Cross, will occupy a new location at 557 Washington Avenue beginning next Friday after almost 18 years in the store at 260 Washington Avenue, according to Dr. Frank Durkee, chapter chairman.

The new headquarters will include six rooms, basement storage space, garage and parking area, and the move was made possible through the efforts of Martin Cosgrove, chairman of the housing committee.

A gift of \$2,000 was made by Louis M. Pansone, president of Federal Leathers Company to provide lighting, rugs, office furniture and storage facilities.

"In an attractive, efficiently organized headquarters, the Red Cross will be better able to serve the community," Dr. Durkee commented.

Reservations Being Taken For Camp Ro-Li

Camp Ro-Li will be operated this year for girls from June 25 to July 24 and for boys from July 25 to August 22.

Applications will be accepted until May 14 for children from 9 to 13 and fees are \$40 for two weeks, plus a \$2 registration charge.

Parents are urged to make their reservations early with William Smith, 354 Washington Avenue.

Town Will Buy

(Continued From Page One)

The sweeper ran night and day and that there are more streets in the town.

Commissioner Smith said the new lead loader was necessary, because such a piece of equipment takes a lot of abuse.

The commissioner said the backhoe would pay for itself in a couple of years and replace antiquated methods of trenching which formerly had always been done in a "Coolie" type of labor.

CANCER DRIVE AIDES NAMED

Appointed this week by Elmer S. Hyde to serve on the Cancer fund drive, of which he is chairman, were Mrs. Douglas Clark, vice chairman and house to house collector; J. Howard McMaster, treasurer; Fidelity Union Trust Company; Mrs. James Dunn, secretary; Mrs. Thomas F. Dillon, ward chairman;

Harry Banger, industry; F. Douglas Waisworth, special gifts; George D. Newman, organizations; Evan Thomas, schools; Miss Helen Adams, churches; Miss Helen Colahan, municipal employees; Charles Tedesco, police; Chief Harry, Fire department; Aaron Knight, publicity.

Referendum

(Continued From Page One)

lic discussions.

"It may also well be worth consideration of the board whether the plant renewal program concerning the existing grade schools should not altogether be divorced from the problem of the new high school, so that the April referendum, if it cannot be postponed altogether, should concern itself exclusively with the additions to the high school, leaving the high school problem to a later referendum."

The Association also took issue with the proposed high school from the point of view of the school site.

"While it may be absolutely true," the Association said, "as Mr. Ackermann of the Citizens Association maintained at the meeting, that pillings and underpinnings can provide a foundation for the planned buildings, it does not necessarily follow that the site is properly referred to as 'the bog.'"

The Association also said the construction of such subterranean structures which the physical safety of our children demands.

"We would be obliged to have from the board an unequivocal answer to the question: Does the proposed site permit for the building of such shelters, or not? It was aware a change in site would probably entail additional costs, urged the board to continue means to get state and federal aid said:

"It would be greatly in the public interest if the board delineated exactly what steps to secure outside financial aid in this important matter have been taken so far."

one of our spokesmen at your meeting (Thursday) raised exactly that point. Frankly, the answer given by Messrs. Kelly and Schwartz struck us as rather callous and as lacking in the far-sightedness one would measure inherent in their respective official connections with the board.

"The position that there is no possible defense against the ultimate weapon and that therefore any plans for the protection of 'youthful lives' could be discarded with a shrug appears to reflect not merely an ostich bird psychology, but is moreover not at all in keeping with the thinking of civil defense and military authorities.

"... mines, caverns, sub-basements and other deep places afford that modicum of protection that may well assure the continuation of life even if life on the surface has been wiped out." If such were not the case, civil defense and military authorities certainly would not have made the effort to provide for shelter areas in big cities.

"If our town has so far failed to do likewise, certainly, a truly far-sighted board should not close its collective to the need for such protection, a need that may become acute at any moment and without prior warning."

"Bog Site"

The Association also took issue with board on the school site.

"While it may be absolutely true," the Association said, "as Mr. Ackermann of the Citizens Association maintained at the meeting, that pillings and underpinnings can provide a foundation for the planned buildings, it does not necessarily follow that the site is properly referred to as 'the bog.'"

The Association also said the construction of such subterranean structures which the physical safety of our children demands.

"We would be obliged to have from the board an unequivocal answer to the question: Does the proposed site permit for the building of such shelters, or not? It was aware a change in site would probably entail additional costs, urged the board to continue means to get state and federal aid said:

"It would be greatly in the public interest if the board delineated exactly what steps to secure outside financial aid in this important matter have been taken so far."

Bellwood Park Group Will Meet Tonight

An executive committee meeting of the Bellwood Park Home Owners' Association will be held tonight in Franklin Casino Hall.

The main body of the Bellwood Park group will meet in the same hall April 13 for a party-meeting in which refreshments will be served.

Drunk Driver Penalized

Net Benjamin, 39, of 15 Washington Avenue, had his license revoked for an indefinite period by Director of Motor Vehicles Fred Gansert, Jr., on a record of conviction December 8 in Florida for operating a car while under the influence of alcohol.

Town Will

(Continued From Page One)

are unlikely to join in the appeal because, like Newark, they were created favorably by the County Tax Board in the equalization table. East Orange's "true value" is set at only 11 per cent of its present tax assessments and Montclair's at 125 per cent. Neither town has joined in the protest action.

The entire revaluation, under the County Tax Board's supervision, is for the sole benefit of Newark which enjoys the lowest percentage of increased assessed values, 94 per cent. That permitted the Newark City Council to announce this week a 1955 tax rate of \$3.04, four points below last year's rate for the lowest levy in 15 years.

The Newark tax rate is expected to drop an additional three or four points when final figures are ready on the amount Newark will save in county taxes this year under the equalization program of the County Tax Board.

Milk Bar

(Continued From Page One)

Ebert said also that the proposed bar was close to a school.

The milk bar was approved unanimously last week by the zoning board of adjustment.

Frank Chieffo of 544 Jaramon Street had asked for the variance. The bar would be at 539 Jaramon Street, a two family store.

At the public hearing last month, some residents in the area had objected to the variance on ground that the milk bar would depreciate their properties and be a general nuisance. The board had reserved decision to await submission of a plot plan for the bar.

After reviewing the plan last week, the board decided that the milk bar would not be detrimental to the neighborhood. Vincent K. Del Guercio, board chairman, reportedly said:

At the public hearing last month, some residents in the area had objected to the variance on ground that the milk bar would depreciate their properties and be a general nuisance. The board had reserved decision to await submission of a plot plan for the bar.

After reviewing the plan last week, the board decided that the milk bar would not be detrimental to the neighborhood. Vincent K. Del Guercio, board chairman, reportedly said:

Committee

(Continued From Page One)

and Madeline H. Sanloose; James Bissell and Eleanor Marinelli; Bissell and William J. Horgan and Anne Boylan; Harry Ward and Anna Ward; Mary E. Jeffers and Geraldine Rappe; Allan P. Conklin and Anna Mallard; Martin P. Mooney and Theresa O'Neill; Third Ward - Frank P. Takash and Sue Pintozzi; Patrick F. Byner and Alice Spillane; Patsy A. Pargi and Heida Faust; Joseph L. Mastandrea and Ann Richlan; Anthony Marino and Theresa Intindola; Patrick La Morte and Rose Del Dufo; Fourth Ward - Anthony W. Domenick and Filomena Domenick; Barton Risoli and Filomena Cerignone; John E. Connelly and Margaret A. Connelly.

Republican county committee members are as follows:

First Ward - Clarence E. Place and Katherine W. Maser; Harold F. Brand and Laura A. Brand; John

P. Demark and Lillian Winfield. Second Ward - James H. Campbell; Bertram C. Stanley and Virginia G. Mermel; Frank Hanger, Jr. and Mary Grace E. Hannon; Robert E. Zepfel and Eileen Vines; Michael P. Devey and Agnes M. Leonard; William P. Martin Leona Candara; Third Ward - Robert D. Carpenter and Rhoda R. Strasser; Warren M. Johnson and Catherine E. North; Daniel H. Hyde and Barbara T. Hyatt; William Fennian and Jessie P. Run; Russell C. Eller and Ruth L. Reynolds; Clarence D. Van Sickle and Robert Hart.

Fourth Ward - Benjamin Maglia and Mary G. Maglia; Angelo F. Feseli and Ruth Fredericks; Caesar Gessario and Vincenza Carbonese; Raymond Bennett; and Theresa Singer; John J. Havas and Mildred F. Rose; Rudolph P. Zoulier and Marion E. McFadden.

Regular

(Continued From Page One)

of County Chairman John E. Cash of East Orange through a 43-member nominating committee representing elected county committee ward and municipal chairmen and vice-chairmen, organized labor, veterans, Young Republicans and women's groups.

"The ticket itself has representatives of all the same Republican groups and is backed by many original Clean Government leaders including Walter S. Gray of Irvington, William C. Cope of Glen Ridge and Frank S. Platts of Newark.

"The voters must recognize there is no major issue in the campaign except this bid for power. The Regular Republican ticket of which we are members is standing firm to protect and continue Clean Government at the State House and the Essex County Court House.

"We are 100 per cent against state sales or income taxes and will insist upon progressive, economic, and humane government at the Court House and our institutions."

Hot News

(Continued From Page One)

Children broke the lock on a gas pump at the White House Laundry, spilled gas on the ground and set it afire, according to police.

Anthony Sprella, Newark contractor, reported a picture window broken in the home he is building at 19 Cedar Hill Avenue.

Mrs. Louis DeStesano, of 110 Harrison Street, told police someone stole a spare tire from the trunk of her 1940 Hudson parked near Farris's Restaurant.

Mrs. Lombardi, of 298 Union Avenue, reported the right rear hub cap stolen from her 1950 Cadillac parked in front of her home.

Clifford Goffrey, 14, of 23 Valley Street, was bitten on the leg by a stray dog Sunday while returning from church. He was taken to Columbus Hospital for treatment by Officers Finn and Dunaway.

Mrs. Charles Kessel, of 136 Adelaide Street, told police boys broke a window in her home with a baseball.

Jerry Barbone, owner of the J & M Auto Repair Shop, 3 Honis Street, told police a large generator had been stolen from a truck parked in the yard.

Robert Mess, 15, of 60 Preston Street, reported missing since Tuesday, was located yesterday in Toledo, O., after a missing persons alarm had been broadcast by police, according to Detective Harry Wurfeld. The son of Mr. and Mrs. Robert Mess, he left home after a family spat, announcing he was not going to school, police said.

Mr. Korkowski, owner of the Maltese Sweet Shoppe, at 477 Washington Avenue, told police \$9 worth of magazines were stolen from in front of his store.

Postmaster John Kant reported a mail carrier was bitten by a dog owned by Thomas Furese, of 228 Brighton Avenue.

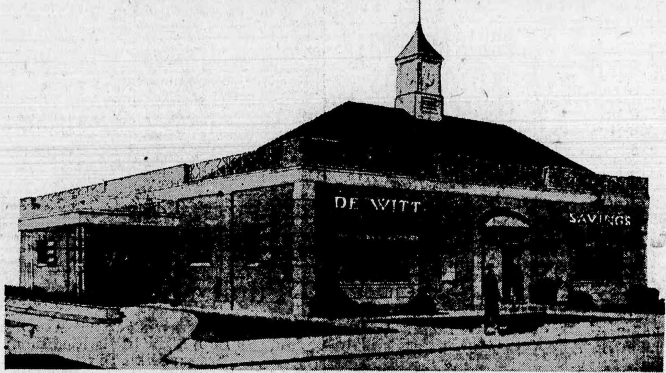
3 1/2 NEW CAR FINANCE PLAN

1. 36 MONTHS TO PAY
2. Insurance can be included
3. Loans approved in a few minutes
Call HUmboldt 5-3623 for newest rate chart.

Franklin Washington
TRUST COMPANY
5 CONVENT OFFICES IN NEWARK
LATE MODEL CARS FINANCED TOO

White Oaks Hardware
PAINTS • HOUSEWARES • HARDWARE • TOYS
78 Union Ave. NU 2-4987 Nutley, N. J.

Presenting Our Beautiful New Building

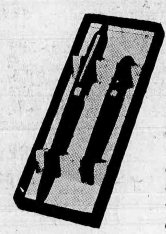


463 Washington Avenue
corner Tappan Avenue
BELLEVILLE, N. J.

NOW OPEN...COME IN AND SEE IT!

OPEN DAILY

... from 9 a.m. to 4 p.m.; also Monday evenings, 6:30 to 8 p.m. You can still receive a gift writing set for opening a new account—as long as present supplies last. You are cordially invited to come in and see our new quarters!



GIFTS!

A genuine Eversharp "His-and-Hers" Pen Set will be given to every person opening a savings account of \$10 or more during this celebration, or adding \$10 or more to an existing account. One pen is men's size... the other for ladies. YOURS as soon as you open or add to your account!

De Witt



Savings INSURED up to \$10,000
Save any sums, any time

Make Use of Our Helpful Services:

SAVINGS ACCOUNTS • TRAVELERS' CHEQUES • MONEY ORDERS • MORTGAGE LOANS • HOME IMPROVEMENT LOANS • G.I. HOME LOANS

WHY PAY MORE FOR YOUR NEW CAR?

See How Much You Can Save Through **ELVY MOTORS**

340 Broad Street Newark

"In The Heart Of The Lincolnton District"

KNOWN FOR YEARS BY NEW CAR DEALERS AS CUSTOMERS AGENT

Famous For Low Interest Rates And Fast Deliveries

That's why the number of our New Car customers has doubled in three years... Through us New Car Owners are really getting better, faster service than elsewhere.

Our New Cars are sold with Full Service Policy and Factory Guarantee. And we offer a standing REWARD OF \$1,000 if proven different.

We Number Amongst Our Many Satisfied Customers, Police Officers, Member of The F. B. I. and Other High Ranking Public Officials.

Don't Lose Your Right To Drive A New Car Because Of High Prices!

YOU CAN NOW OWN A NEW 1955 6 CYL. CHEVROLET SPORT COUPE Fully Equipped For As Little As \$2145

This price includes Powerglide, Large Radio, Large Heater, White Wall Tires, Undercoating and Special Two-Tone Paint

Other Makes Of New Cars Proportionately Low Priced

CALL HU 3-8900 TODAY

You're In Good Hands When You Deal With **ELVY MOTORS**

Right In The Heart Of The Lincolnton District

340 Broad Street Newark

Miss Staniar, Librarian, Is Feted Upon Retirement

By Regina Smardige

Miss Mary C. Staniar, of 64 Rossmore Place, was feted March 16 with a testimonial dinner at the For-Hills Restaurant, given by the Board of Trustees of the Belleville Public Library. Miss Staniar, who retired early this year after 35 years with the Library, was presented with a set of matched luggage. Among the 23 guests was Commissioner Elmer S. Hyde.

The ticket committee of St. Vincent's Academy Alumnae Association, planning a bridge luncheon and fashion show to be held April 12 at the Meadowbrook, met Wednesday at the home of Mrs. Robert Conway, executive chairman. Miss Mary Harold, of 136 Mt. Prospect Avenue, is also on the committee.

"Monhegan Inlet," a lacquer painting by George Kunkel, of 18-0 Belle View Gardens, will be included in the "Work by New Jersey Artists" exhibition which opens Tuesday at the Newark Museum, to continue until May 1.

Enjoying a performance of the musical "Penny" last week were Mrs. Alfred Calabrese, of 590 Washington Avenue, Mrs. Kurt Krueger, of 360 Washington Avenue and Miss Irene Galt, of 173 Cedar Hill Avenue.

Sixty guests gathered at the home of Mr. and Mrs. Hugh Williams, of 47 Oak Street, Saturday night to celebrate Mr. Williams' birthday and retirement from Wallace and Tiernan Company. His birthday was on St. Patrick's Day but he complied 31 years with the company the same day.

"Memoirs of Hadrian" by Marguerite Yourcenar, will be reviewed Wednesday in the Popular Reading Room of the Newark Library by Lillian C. Perron, from 12:25 to 12:50 and 1:25 to 1:50 p.m.

Sewing Club Card Party

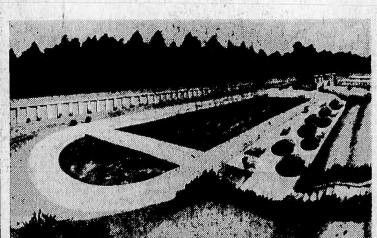
A card party will be held Monday afternoon at the Recreation House, Garden Avenue and Jerusalem Street, from 1 to 4 by the Monday Sewing Club.

Table and door prizes are planned and proceeds will go to the Sunshine Guild of Semper Fi-deles chapter, OES.

THE TERRACE CLUB OF NUTLEY INC.

A private family swimming club, located at 116 Harrison St., Nutley, next to Kal's Restaurant & Cocktail Lounge... Construction to be started in March for the 1955 season. Limited membership.

Facilities to include main pool, 40' x 90', wading pool 40' x 25', swimming instructions, children's activities (counselor supervision), snack bar, recreation area, and picnic area... as shown by architects sketch below.



Each membership must include Cabana or Locker rental, plus family membership dues and tax.	
FAMILY MEMBERSHIP DUES (includes husband, wife and unmarried children)	\$ 10.00
FEDERAL TAX (10%)	1.00
CABANA RENTAL (each cabana equipped with private stall shower)	
HUSBAND, WIFE AND TWO CHILDREN (no charge for children under 2 years of age)	300.00
ADDITIONAL CHILDREN (per child)	25.00
BY MUTUAL AGREEMENT — 2 MARRIED COUPLES (children)	350.00
LOCKER RENTAL Showers & Dressing Rooms for men and women provided.	
Locker Arrangement:	
One locker for male members of family	
One locker for female members of family	
HUSBAND, WIFE AND TWO CHILDREN (no charge for children under 2 years of age)	200.00
ADDITIONAL CHILDREN (per child)	25.00
BY MUTUAL AGREEMENT — 2 MARRIED COUPLES (children)	250.00
Applications will be considered by the Board of Directors & Membership Committee in order received.	
Members subject to all rules and regulations of the Terrace Club.	
For Further Information Call NU 2-9694	
Board of Directors — Walter Kolakowski, President	

"Via Dolorosa," Passion Pageant At Holy Family

Amateur Parishioners Act In Lenten Play Without Dialogue At Holy Family Church

In a new and utterly different type of play, the amateur actors of Holy Family Church during Lent are depicting the final hours of Christ's life on earth. A passion pageant, "Via Dolorosa," the "sorrowful way," is being presented for the second consecutive year by the Lucy Filippini Sodality of the church. It is a musical composition of the passion by C. Culbert Nunn. Last year three performances were given, and more are scheduled for this year, depending upon the demand for tickets.

No Dialogue

The play, an original interpretation of the Stations of the Cross is written and directed by James Festa, a 29-year-old choreographer from Weehawken. It is without dialogue. Christ's last hours are portrayed through a series of fourteen stations which the players travel on a specially constructed track of the church. It is a musical composition of the passion by C. Culbert Nunn. Last year three performances were given, and more are scheduled for this year, depending upon the demand for tickets.

To sharpen the dramatic impact, Festa interspersed Nunn's score with the "Third Word" from Bach, "Eli, Eli, Lama Sabachani," the "Agnus Dei" from Handel's "Messiah," and a traditional Italian Christmas carol, "Il Pastorello," which opens the pageant.

This year Puccini's "Sister Angelica" has been added and Festa intends later in Lent to introduce "Agnus Dei" from Gian-Carlo Menotti's opera "The Saint of Cecilia Street." It will be the first time that part of the music from "The Saint of Cecilia Street" will be heard in another production.

Dual Role

Jean Lessa, directress of music is the organist. The violinist is Wendell Arnold; harpist, Marc Miller; drummer, Don Dominick; and trumpet, William Gilchrist.

The cast, in order of appearance includes: narrators, James Lacara, Mary Mother of Christ, Marie Bugliore; Court Lady, Antoinette Davis; Court Boys, Arthur Taylor, Donald Taylor, First Thief, Michael Clarizio; Second Thief, Fred Utrachchi; Christ, Louis Crescenzi; Roman Centurion, Angelo M. Vaccaro; Roman Soldiers, Vincent Lessa, Joseph Neglia, Richard Maraculo, Frank Restuccia, William Aberbach.

Pontius Pilate, Henry Annunzio; Joseph, Joseph Rittacco; Serpent, Roy Melvin Smith; First Thief, George Schmidt; Salve Seller, Frank Negro; Dancin' Girl, Lucille Flanagan; Arab Boy, Anthony Vaccaro; Merchant, Anna Francis; Copper Vendor, Dorothy Cocchiola; Girl at well, Ginny Melillo; Veronica, Mary Crescenzi; Mary Magdalene, Dorothy Cundari; Simon, Al Duva; Mary of Cleophas, Rose Marves; Joseph of Arimathea, Vincent Lessa; Followers of Christ, children, Vita Beninati; Joanne Tardillo, Frank DiCicci; Maria Grace Restuccia.

Women: Mary Albanese, Carmela Beninati, Carmela Di Cicci, Ann De Sordi, Katherine Guglielmo, Mary Mazza, Anna Miscia, Nina Nette, Rose Paparatto, Lillian



Jesus is Taken Down From the Cross, the Twelfth Station of the Cross, as depicted in the Holy Family passion pageant. Louis Crescenzi portrays Christ; Rose Marves, Mary of Cleophas; Dorothy Cundari, Mary Magdalene; and Marie Bugliore, Mother of Christ. Joseph of Arimathea, obtaining permission from Pilate, takes the Sacred Body from the Cross. The Holy Women tearfully wipe the Lord's face and carefully remove the nails and crown of thorns which have caused Him to suffer.

Santorio, Rose Restuccia, Helen Saperotta and Josephine Testi.

Sings Solo

The choir has Marguerita Sambrana as soloist singing "La Gracia Edificadora Dei Cielo" (The Pastorello), Anita Bucci and Aurora Grasso singing the "Third Word" and Howard Ross, "Eli Eli."

Others are Chris Asaro, Anita Bucci, Eleanor Carbone, Rose Cosario, Judy Cole, Marge Christopher, Renee De Sordi, Helen Dobrowolski, Mildred Duva, Yolanda Del Sordo, Dolores Penzon, Aurora Grasso, Marie Gramaglia, Elaine Heilicht, Lon Lubertazzi.

Pat Luft, Eloise Lewis, Bridget Maresse, Angela Mauriello, Rose Potto, Dolly Pengitore, Jean Romano, Loretta Romano, Jean Scarpa, Lucy Salachia, Fran Sneed, Cora Tauriello, Rosemary Van Over, Ursula Yasso and Betty Zito.

The production staff includes: co-chairladies, Cecile DeFuria, Catherine Pokowski; director, James Festa; assistant stage managers, Vincent Lessa, assistant stage managers and lighting, Frank Romano, Sam Maffei. Costumes were designed and executed by Angela Mauriello and Adelaide Catena.

Soldiers helmets designed and executed by Francine Restaino; program cover, Donald Van Over, Mafie; Sal Avaro; photography, Donald Van Over; electricians, Joseph D'Alconzo, William Maresse; printing, John Bugliore, Marie Bugliore; publicity, Arnold Gattuso; sales promotion, Benita De Capua, Mary Fontaine; ticket chairladies, Marge Narucki, Vera De Angelis.

Ticket staff: Dorothy Cundari, Lucille Oliver, Mildred Duva, Anna Mae De Furia, and Helen Vecchio. Make-up, Francine Restaino, Helen Vecchio; carpenters, George Schmidt, Babe Schmidt; utility staff, Adelaide Catena, Mary Fontaine, Edward Pokowski, Helen Saperotta, Carmine Scarpa, Hugh

COUPLES ATTEND CANA CONFERENCE

The sixth in a series of third Cana Conferences was held Sunday at St. Peter's and Rev. John P. Hourihan, moderator, discussed the economical and materialistic aspect of marriage.

Benediction of the Most Blessed Sacrament followed, offered by Rev. Francis Ignatius. Couples attending included Mr. and Mrs. Edwin Parkins, Mr. and Mrs. John Kuehnle, Mr. and Mrs. George Lynch, Mr. and Mrs. Tony Maffia, Mr. and Mrs. Bill Baker, Mr. and Mrs. David Adams, Mr. and Mrs. Emmet Malloy, Mr. and Mrs. Harold Lister, Mr. and Mrs. Chester Caparelli.

Mr. and Mrs. Kenneth Dwyer, Mr. and Mrs. Joseph Sullivan, Mr. and Mrs. Justin McGuire, Mr. and Mrs. Tom Staples, Mr. and Mrs. Willie MacDonnell, Mr. and Mrs. Leo McClintchey, Mr. and Mrs. Martin Maloney, Mr. and Mrs. Joseph Shaw, Mr. and Mrs. Louis Molosa.

Mr. and Mrs. Edward Finn, Mr. and Mrs. Steven Klisch, Mr. and Mrs. Clarence Price, Mr. and Mrs. Frank Mossa, Mr. and Mrs. Ken Broo, Mr. and Mrs. John Donahue, Mr. and Mrs. Bill Donahue, Mr. and Mrs. Harry Federbach, Mr. and Mrs. Colin Little, Mr. and Mrs. Walter Matts and Mr. and Mrs. Joseph Ryan.

Serving on the committee were the Finns, reception; Shaws, invitations; Maffias, refreshments; and MacDonnells, chairman.

MEMBERSHIP TEA AT WOMEN'S CLUB

A reception and tea for members of the Women's Club will be held Monday afternoon at 2 at the Clubhouse. Mrs. James K. Morse will present illustrated slides on the "Life of Christ" and a musical background will accompany her talk.

The Eighth District Spring Conference will be held Thursday at 10:15 at the First Methodist Church, 601 Kenney Avenue, Arlington. The Belleville and Arlington Club members will be hostesses.

ORLINSKY FETED BY PROGRESS CLUB

Jack Orlinsky, former president of the Progress Club of Congregation Ahavas Achim, was honored Saturday with a testimonial dinner at the For-Hills Restaurant attended by 125 guests.

Dr. Albert L. Raab gave the invocation, and Henry Zadikoff, president of the congregation, was toastmaster.

Speakers included Judge Edward J. Abramson, first president of the club; Dr. Benjamin A. Jacobson, president of the Board of Trustees of the congregation; Louis Lempert, current president and Mrs. S. J. Stiel, of 191 Alexander Avenue, Nutley.

Orlinsky was presented with a gift of luggage and a scroll from his brother, Alfred, on behalf of the family.

Cambourakis To Appear In Musical Silhouette

Nicos Cambourakis, conductor of the Nutley and Mountain Lakes Symphony Orchestras and concert violinist, will be the guest artist in the final Musical Silhouette Program of the season tonight from 7:30 to 8:30 at the home of Mr. and Mrs. S. J. Stiel, of 191 Alexander Avenue, Nutley.

The recitals are sponsored by Mrs. David Williams of Greylock Parkway.

Rosarians Plan "Bamboo Cross" Theater Party

Times social... Rosarians... "Bamboo Cross," the Blackfriars production, will be attended by a theater party from St. Peter's Rosary Confraternity on May 12.

Buses will leave the church and reservations will be accepted by Mrs. Edward Carr and Mrs. James Ryan until April 30. Tickets will also be available at the regular meeting April 11.

NOW OPEN
NEWLY DECORATED
GLAMOUR BEAUTY SHOP

323 1/2 Union Avenue
Belleville, N. J.
PL 9-3528
HELENE BRADY IN ATTENDANCE

The Stork Club

Mr. and Mrs. Vernon J. Kile, of 66 Perry Street, announce the birth of a daughter, Anne Marie, on March 8 at Memorial Osteopathic Hospital, Elizabeth.

Mr. and Mrs. William C. Bragulla, of Sanford Avenue, are parents of a daughter, Valentina Mario, born March 18 at Orange Memorial Hospital.

JAY BERGIDA'S BAR MITZVAH

Jay Bergida, son of Mr. and Mrs. William Bergida, of 125 Birchwood Drive, will celebrate his Bar Mitzvah during services tonight and tomorrow at Congregation Ahavas Achim.

Dr. Albert L. Raab, rabbi, will officiate at the "consecration" tonight at 8:30 and deliver a sermon entitled, "Sacrifices of the Heart." Dr. Sy Fischer will chant the liturgy, accompanied by the synagogue choir led by Miss Doris Cohen.

Mr. and Mrs. Bergida will serve refreshments after the service. The ceremony on Saturday will begin at 9:30 a. m. when Jay Bergida will pronounce the benediction and chant the "Hafotrah." Rabbi Raab will bless and confirm him and a "Kiddush" will be held in the vestry room.

The parents will hold an open house from 1:30 on in their home.

Shedden, Edna Traeger, and Helen Vecchio. Rev. Anthony T. Bent is moderator of the St. Lucy Filippini Sodality.

FOR A HAPPIER FUTURE...
SAVE NOW!
3%
CURRENT DIVIDEND
HAYES
SALES, INC.
ASSOCIATION
555 Broad St.,
Newark 2, N. J.
Market 3-8633

GRAND OPENING
Friday, April 1st
GERARD HAIRDRESSER

TAX RETURNS
PREPARED
HERMAN S. ENTIN
383 Washington Ave., 2nd floor
Prudential Building
PL 1-0476
For evening appointment call
PL 9-1723

65 1/2 Belleville Avenue
Bloomfield, N. J.
Our new beautifully decorated salon, with up to the minute equipment, features the very latest in hair styling and beauty care. Mr. Gerard and his expertly trained staff, anticipate the pleasure of catering to your every beauty need.
At your convenience stop in or phone Bloomfield 2-0429.

WANTED
41 NEW FAMILY LAUNDRY CUSTOMERS IN BELLEVILLE
With This Coupon Only We Will Do A Sample (\$1.50) Thrifty Laundry Bundle (Flatwork - Ironed And Wearing Apparel Dried And Folded Or Damp) Absolutely Free! Phone us now.
One of Jersey's Better Laundries
Homestyle Laundry
105 Walnut Street
Montclair, N. J.
Montclair 2-0081
Founded 1885

YOUR LOCAL MERCHANT

... studies the needs of his community; brings to it a large selection of merchandise for which to choose; caters to individual requests and desires. He has to in order to stay in business.

To deal with him is definitely to your advantage. You can shop at your leisure, be served by your own townspeople, and save much time, energy, and often money.

PEOPLES NATIONAL BANK AND TRUST COMPANY
237 WASHINGTON AVENUE
BELLEVILLE, NEW JERSEY

Parking for Customers Adjacent to the Bank Building

SPOTLIGHT on SPORTS

By Bob Gorlin

Big Ten In Basketball

In a move that some outsiders didn't expect to happen for some time it was announced yesterday by Big Ten president Edward Assmus that starting next season basketball will be operated on a league basis with a Big Ten champion being crowned.

I had known that basketball would be accepted by school administrators since I was in attendance at a luncheon-meeting of Big Ten members at Irvington High School three weeks ago. I was present as a result of an invitation made by Assmus, principal of Nutley High School, and was the only newspaper reporter in attendance at the history making meeting but agreed not to publicize the prospects of Big Ten basketball until it became a reality. Now it can be told.

Last spring the administrators turned thumbs down on the hoop proposal by a 6-3 vote with Orange not voting. Nutley, Bloomfield and Montclair were the only schools in favor of adding basketball. That was the last mention of basketball officially until Assmus took charge of the "hot potato" and reopened the discussion to the delight of the coaches as he presided over the meeting. After a short lull before the storm an eager session took place with Harry Rice, principal of Bloomfield High School, and Bill Fogarty, athletic director of Kearny High School, leading the battle for the inclusion of basketball. Rice was spokesman for Bloomfield and took a firm stand as he represented George Cella at the meeting. Cella, chairman of the Essex County Basketball Tournament, was openly disappointed over the defeat a year ago.

Most discussion was in favor of basketball but all the talking seemed as if the "problem child" would be tabled for future study until Nutley Coach Dave Broffman said, "Is anyone against adding basketball?" That was the key question of the day, for if no school was opposed to adding basketball the battle was won, right then and there. In an unofficial consensus all schools agreed that a league could be worked out with only Columbia High School taking a "middle of the road" stand. Columbia representatives did say they would cooperate if basketball was operated on the same basis as basketball which has been highly successful.

That was it! Everyone present was positive that basketball had been accepted but I had to hold back on the story for three weeks as each school representative discussed the question with their respective school boards and then notified Al Bray, athletic director of Irvington High School, who is Big Ten secretary.

All coaches and administrators present agreed that the pressure problem should be kept to a minimum. "That is anyone against adding basketball?" That was the key question of the day, for if no school was opposed to adding basketball the battle was won, right then and there. In an unofficial consensus all schools agreed that a league could be worked out with only Columbia High School taking a "middle of the road" stand. Columbia representatives did say they would cooperate if basketball was operated on the same basis as basketball which has been highly successful.

A Healthy Relationship

For me it was the first time I had attended a Big Ten meeting and I left greatly impressed at what can be accomplished by rival coaches. They may be bitter enemies on the playing field but good feelings are evident at a gathering of this type that also includes school superintendents, principals and athletic directors. It is definitely a healthy relationship.

More than 50 men from the 10 member schools attended the meeting called by Assmus. Anyone who had anything to say on the controversial subject was recognized. Attending from Belleville were basketball coach "Jitty" Wische and baseball coach Ed Berlinski.

New Baseball Association Unlikely

Bill Murphy, manager of the Belleville Reds, met with F. C. Kruckmann, of Cranford, last week about the possibility of Belleville participating in a proposed Junior Baseball Association. It was Kruckmann who dreamed up the idea of a statewide association being made up of seven leagues, each league taking in three counties.

Bob Cook, director of the Recreation Department, was waiting to hear what Murphy thought of the plan before taking any definite stand but from what Murphy thinks, the Kruckmann plan will never be more than a talking point.

Murphy said that there appear to be too many obstacles to overcome. There is too much competition from other organizations such as Junior American Legion baseball, Babe Ruth Leagues and P. A. L. circuits throughout the state. So far only one town in Essex County has shown any interest at all in Kruckmann's plan. It is Murphy's feeling that with most towns fielding a team in some kind of association already there need not be enough to start another. So as it stands the Belleville Reds will not be in any league this summer.

"Rec" To Organize Softball Leagues

Hal "Bud" Brand announced that organizational meetings will be held at the Recreation House in Joralemon Street to get ready for the Town-wide Senior Softball League and the Industrial League. The meeting for the senior softball loop will be held on Monday night starting at 8 p. m. Brand will direct the industrial circuit meeting on Wednesday night. Both leagues, sponsored by the Recreation Department, will begin in the first week in May and continue until the end of August. All team managers or representatives are being invited by Brand to attend the planning meetings.

The Senior Softball League will be made up of squads with all members being out of High School. Last season eight teams took part in the summer circuit that saw De-Rosa's Wildcats defeat Babes for the championship. In the Industrial League 14 teams competed a year ago with Federal Leather copping the loop title. All members of the industrial teams must work for the company they represent according to a ruling set down by Brand and the Recreation Department.

Richie Veith Gains Berth On All-County "5"

By Bob Gorlin

1954-55 All-Essex County Basketball Team

Player	Position	School
Clyde Bond	Forward	Orange
Joe Moore	Forward	East Orange
Percy Oliver	Center	West Side
Richie Veith	Guard	Belleville
Fred Hopke	Guard	Irvington Tech

Second Team

Dave Klurman, guard, West Side; Phil Samuels, center, Clifford Scott; Dick Zeiler, forward, Irvington Tech; and Bill Collier, forward, West Side.

Honorable Mention

Doug King, Clifford Scott; Cary Wills and Lorenzo Wood, Orange; Hugh Dundon, Seton Hall; Bill Downey, "Bucky" Bowen and Hanne Halligan, Montclair; Mickey Cohen, Montclair Academy; and Leo Sager, East Orange.

The 1954-55 All-Essex basketball quintet is a well represented "dream team" as five schools contributed to the outstanding aggregation with all five standout players being newcomers to the squad as none were carried over from last year.

Named to the mythical all-star array are Clyde Bond, of Orange; Joe Moore, of East Orange; Percy Oliver of West Side; Richie Veith, of Belleville; and Fred Hopke, of Irvington Tech.

The squad is a high scoring group with each of the players selected, tracking their respective teams in the offensive department all season. All five are well known to their basketball circles. That was until Hopke came along.

Most Publicized Player

Probably the most publicized player in Essex County is Fred Hopke, the rally-poly guard who put Irvington Tech on the basketball map. Irvington Tech, like the rest of the technical schools, was never much of a contender in basketball circles. That was until Hopke came along.

Since playing for the Tradesmen and Coach Hank Wray, Hopke has just about smashed every existing record in the books at Irvington Tech. He "swatted" to the individual scoring title in the county with well over 400 points and several times finished games above the 40 mark.

A stocky half player, Hopke is the heaviest, boy on the squad. He tips the scale at 215 pounds. But the weight that Hopke carries around doesn't seem to hamper his scoring success.

One Hopke takes off, he is tough to stop as he drives in for two-pointers. Under the hoop he will shoot like a deer in the headlights. While Hopke is probably the most publicized player on the squad, the honor of being the outstanding and most versatile court performer goes to Richie Veith, of Belleville, who teams up with Hopke at the other guard position.

Veith is the player who took charge of a Belleville quintet that wasn't supposed to do much this season but sparked the Blue and Gold to the semi-final round of the Essex County Tournament before losing a one-point thriller to West Side in a triple overtime game, the first in the history of the tourney.

All-State Candidate

A good bet for all-State honors, Veith is what the experts classify as a "coach's dream come true." Belleville coach Jitty Wische describes his star player simply by saying, "Veith can do almost anything on the court and no matter what he does he looks like a polished performer. He can drive with the best of them and can set from outside better than anyone around the area."

Without Veith, Belleville would have just been another also-ran. With Veith in the lineup, the Blue and Gold was always dangerous as he averaged better than 22 points a game. A half-dozen major college basketball coaches and scouts already are casting more than a casual glance in Veith's direction.

At center is Percy Oliver, of West Side, who at six-feet, three-inches, is the tallest member of the All-Essex quintet. It was Oliver who was the top rebounder for Coach Walt Bakum and finally was the difference in favor of the Rough Riders as they went to the finals.

Bond is the most cooperative player on an Orange squad that fielded several scoring individualists, yet he always came through with top performance. Most coaches single out Bond for his clean sportsmanship. Never did he lose his temper or argue with an official, when a foul was called.

Watches — Clocks — Jewelry

Watch and Clock Repairing

W. T. HART
127-A Washington St.
Newark 2, N. J.
Market 3-6424

For The Correct EASTER GIFT

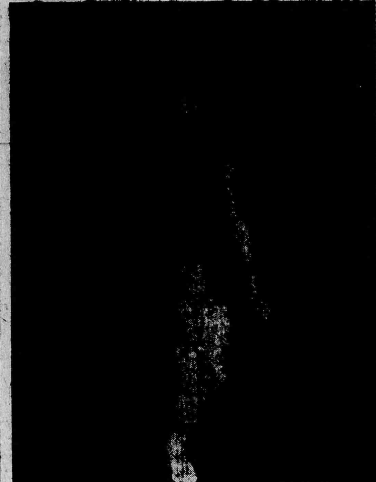
CAPALBO'S GOURMET SHOP

Suggest
An Attractive
Gift Basket

Check List of Imported
Fruits and Delicacies from
The Four Corners of The
Earth.

An Appreciated Gift for
Bon Voyage, Convalscent, etc.
Only at Capalbo's can
one find such a Rare Assortment
of Fine Delicacies.

337 Passaic Avenue Nutley, N. J. NU 2-4262
Delivery Made Anywhere



Richie Veith

HILLTOPPERS SWEEP SPOILERS TO WIDEN LEAGUE LEAD

The Hilltoppers took a big stride toward annexing the 54-55 league championship when they swept their series with their closest rival, the Spoilers, despite a fine individual performance from Captain Sam Taylor.

Art Farrar led the Aces to a sweep over the Muffins, while John Seasholtz led the Busters to a sweep over the Farmers.

In the remaining games of the week the Cubs took two from the Old Timers.

Team	Won	Lost	Ties
Hilltoppers	48	24	788
Spoilers	41	37	768
Old Timers	39	39	772
Aces	37	34	736
Farmers	32	34	791
Muffins	35	37	710
Cubs	25	47	555
Busters	24	45	676

OUR CLASSIFIED SECTION BRINGS 'QUICK RESULTS'

BELLEVILLE LIVE POULTRY MARKET

Under New Management

Selling Live Poultry and Fresh Eggs

Open daily 8 A. M. to 6 P. M.
Fridays 8 A. M. to 9 P. M.
Saturdays 8 A. M. to 10 P. M.

VINCENT J. CASSILLO

89 Joralemon St. Belleville, N. J.
PL 9-4786

PL 9-1497

EYES EXAMINED

Dr. M. Roachvarg

OPHTHOMETRIST

Mon & Fri 9:30-6

Closed Wednesday

Tues., Thurs. & Sat. 9:30-6

By Appointment

132 Washington Avenue

Belleville

Advertising like this is

BUILDING BUSINESS FOR SOMEONE

BELLEVILLE K.C. PLAYS HARRISON SUNDAY NIGHT

St. Peter's School, CYO Teams Also Face Action In Three- Game Benefit For Deaf Center

Joe and George Lister, Ed Leonard, Mike Flynn, Al Caragher and Tom McManus from Belleville and Frank Moore and Ed Ryan from Newark will be included in the line-up of the Belleville Knights, who take on the Harrison Knights Sunday at 9 p. m. in St. Peter's School.

The game will be one of three played this night in a basketball benefit for the Catholic Deaf Center. The basketball triple-header is sponsored by the Belleville Knights of Columbus. Admission is 50 cents for adults and 25 cents for children.

The Belleville Knights were beaten in an over-time battle against the Harrison team in a game played at Harrison last night. Players for the Harrison squad include former high and college stars from Hudson County.

In the first game of the evening, at 7 o'clock, St. Peter's grammar school team takes on Sacred Heart (Bloomfield) school team. Sacred Heart won the grammar championship in the county CYO league.

At 8 p. m., St. Peter's Junior CYO will play the Deaf Center team. St. Peter's beat the Center in a close game earlier this year.

Examinations for firemen and patrolmen are open to male citizens who have resided here for at least two years preceding the April 11 filing date of application.

Applications may be obtained from the Civil Service Commission, 1060 Broad Street, Newark.



Includes Heavy Duty Zippers, Containing Chain of Buffles, Box Plots and Kick Plates. All materials guaranteed - Van Dred, Pre-Shrink, Washable.

Applications may be obtained from the Civil Service Commission, 1060 Broad Street, Newark.

SLIP COVER SALE

Includes Heavy Duty Zippers, Containing Chain of Buffles, Box Plots and Kick Plates. All materials guaranteed - Van Dred, Pre-Shrink, Washable.

SOFA AND TWO CHAIRS 79.50

Custom Furniture Upholstering and Repairing
ALL WORK GUARANTEED

KUFRIN'S UPHOLSTERING SHOP

547 Washington Ave. PL 9-7620 Belleville

evolutionary

New... FERTILIZER,
SOIL BUILDER AND SOIL
CONDITIONER

One feeding Now makes
finest lawns and gardens
... lasts all season

PRODUCES more luxuriant lawns,
flowers, trees, richer, more vigorous
plant production. No leaching out...
has a full season. GLORION, the complete
plant food with no filler, is the only thing
to a perfect soil conditioning agent
nature left, so much for man to do about it.

AND HERE'S WHY... GLORION (4-8-8) is chock
full of the important trace elements necessary to
healthy plant growth... magnesium, copper, boron, zinc,
molybdenum, iron, etc. plus essential nitrogen plus
phosphorus, potassium and calcium in correct formula.
GLORION's humus content is rich in carbon.

AMAZING THREE-IN-ONE ACTION CONVERTS SANDY SOIL AND HARDPAN INTO FRIABLE LOAM

NOW is the time to prepare for spring's green loveliness whether
flowers, trees, richer, more vigorous
plant production. No leaching out...
has a full season. GLORION, the complete
plant food with no filler, is the only thing
to a perfect soil conditioning agent
nature left, so much for man to do about it.

• At your dealer: 50 lb. bag \$5.95... 25 lb. bag \$3.25
• Write for dealer nearest you. Send for FREE Brochure.
• Dealer and distributor inquiries invited.

A Product of Soil Builders International Corp.
BURNETT DISTRIBUTING CORP.

Northport, N. Y.
In New Jersey Telephone Justice 4-6876

At These Dealers

Bergenfield	A & A Hardware	Morristown	Rand-Robert
Cedar Grove	Cash Groves	Mountain View	Oak Farm
Clifton	John Devoe & Sons	New Milford	Spencer's Nursery
Dumont	Dumont Coal & Lumber	Paramus	Otto Baggman, Inc.
Englewood	Guthrie's Garden Shop	Yonkers	S. M. Monowood
Fairfield	Plymouth Park Hardware	River Edge	Comfort Coal & Lumber
Hackensack	Comfort Coal & Lumber	Traneek	Bergen Tool Rental Co.
Linden	Phillip H. H. Nursery	Westwood	Philips Manor Hardware
Midland Park	Midland Park Nursery		

School Philosophy Succeeds

Survey Head Says Community Receptive To Education Program; Lauds 'Stability' In High School

(Second of a series of articles on the high school evaluation here, as presented by Earl Master, Reading (Pa.) High School principal and chairman of the evaluation committee.)

Stability

With 93 per cent of the current senior class spending their fourth year in this school, the pupil population stability record could scarcely be improved. This stability is a strong factor in school morale as well as pupil attitude and school citizenship. The committee has noted that about one-third of pupil withdrawals are in reality transfers to other schools, thus representing no school mortality.

Records of educational interests show almost fifty per cent of the present senior class tentatively planning further education of some type. This is not the far out of line with follow-up records which show that approximately forty-two per cent of the graduating class have been rolled for post-high school training.

The correlation between the "occupational" intention, records and the follow-up occupational records is very high. This would seem to indicate a very realistic attitude on the part of the pupils and an effective guidance effort on the part of the staff.

Basic community data reflect

meeting these needs, the staff has, in the opinion of this committee, been overly optimistic in evaluating their success at approximately 90 per cent (4.5 on a five-point scale), the staff places itself in an extremely vulnerable position with tenuous evidence. The committee would be inclined to evaluate this school somewhat lower on the scale at 3.5 or 3.6, which is still a positive rating.

The statement of philosophy developed by this staff is broad, sound, progressive, the stated objectives reasonable, attainable, and commendable. The committee believes that if this school succeeds in living up to its philosophy and in attaining its objectives in a majority of instances, it is doing commendable work and rendering real service.

(Next Week: Program of Studies)

Additional \$500 For Cottage Street

The town commission this week held over an ordinance appropriating an additional \$500 for work on the Cottage Street improvement.

The original ordinance appropriated \$10,000 for the job. Commissioner Kenneth Smith said yesterday that the \$500 ordinance was necessary because the low bid was that much more than the amount the town submitted for the installation of water mains. He said the benefiting property owners pays for the street improvement.

First Aid Course Opens

A First Aid course will begin Tuesday under the auspices of the Red Cross at School Nine. Classes begin at 7 p.m. and will be instructed by John B. Dillen, chairman of the First Aid program.



HOT OFF THE PRESS . . . is the Bellwood Crier, prize-winning newspaper published by the pupils of School Ten. JoAnne Tobia, editor, with George Daddis, assistant editor, look over their publication which took first prize in a national contest.

Charles Rawcliffe

Charles Rawcliffe, formerly of 113 William Street, died March 19 after a long illness. He was 88.

Born in Nutley, Mr. Rawcliffe resided in Belleville 60 years and operated his own painting and decorating business before retiring 13 years ago.

A member of Everyman's Bible Class, he leaves his wife, Belle Van Winkle Rawcliffe. The couple marked their 65th wedding anniversary in August.

He is also survived by a daughter, Mrs. Ruby Delhagen, of Nutley; two sons, George O., of Belleville and John Henry Rawcliffe, of Verona; two sisters, Mrs. Raymond Parkhurst, of Newark, Mrs. Minnie Moeller, of Tannersville, N. Y.; seven grandchildren and three great grandchildren.

Charles C. Gridley

Charles C. Gridley of 120 Rutgers Street, died at home March 19, after an illness of six months. He was 80.

Born in Detroit, Mr. Gridley had lived in Chicago and Elizabeth before moving to Belleville about 25 years ago. He had worked in the finance and export department of General Motors Corp. in New York for 28 years before retiring six years ago. His wife, Mrs. Henrietta Radcliff Gridley, died 10 years ago.

Surviving are a son, Russell Gridley, at home, and to grandsons. Services were conducted in the William V. Irvine & Son Funeral Home.

Hugh Kittle Commands USS Bennington

Commander Hugh D. Kittle, training advisor of the U.S. Naval Reserve Training Center at Clifton, and Belleville high principal, took over the bridge of the USS Bennington during a last weekend cruise in which the entire training center participated.

The men received practical training experience in all phases of shipboard work in addition to a tour of the modern attack aircraft carrier.

Sophie Lukowiak

Sophie Lukowiak, of 59 Baldwin Place, died March 22. She was the wife of the late John C. Lukowiak. She leaves three sons, John, Raymond and Stephen Lukowiak, and two daughters, Mrs. Helen Cook and Mrs. Clara Austin.

Funeral services were held from the Kierman Funeral Home, 101 Union Avenue.

Anthony Calamai

Anthony Calamai, of 688 Mill Street, died March 22. He was the husband of Margaret Calamai, and father of Caesar, Alice and Alexander Calamai.

Funeral services were held from the Zarro Funeral Home, 146 Harrison Street, Bloomfield. A Solemn High Mass of Requiem was offered in St. Anthony's Church and interment was in Mt. Olivet Cemetery, Bloomfield.

Trashy Books

Continued From Page One

Inspector of the code standards, Charles F. Murphy.

However, in a report this week the Legislative committee found the comic book code administrator had been only "fairly successful" and that comic books currently on the stands bearing the authority's seal of approval contain an abundance of the same type of material formerly objectionable by the authority.

Belleville Action

It is this type of situation which Edward J. Fitzgerald, chairman of the Belleville literature committee, here, feels can best be combated by the methods of his group.

"We take definite action to exert pressure on the dealers to take indecent literature off their racks."

What does the committee consider decent?

All publications not banned by the National Organization for Decent Literature. If readers have never heard of this group, that in no way lessens the fact that in the 17 years of its existence it has done much good for the nation by cutting off one of the main sources of crime.

The N.O.D.L., a church group, publishes each month a list of magazines, comic books, and the like which offend its code. All literature is banned which:

1-glorifies crime or the criminal; 2-is predominantly sexy; 3-features illicit love; 4-carries illustrations indecent or suggestive; 5-carries disreputable advertising.

It is this code which forms the basis of the present campaign in Belleville.

Although the gate of New Jersey makes it a misdemeanor to utter or expose obscene literature or indecent pictures, the law, as far as newsstand dealers are concerned, is seldom, if ever enforced.

Police Powerless

"There isn't a thing we can do," police said. "We don't have the authority to tell store owners what publications they can or can't display."

Father John Hourihan, in commenting on the code standards, said: "We sympathize with the small businessman. The distributors hold an 'iron fist' over the storekeepers and force them to purchase the unsavory publications

even if they do not want to sell them."

The owner of a luncheonette and confectionary store on Washington Avenue, who displays the Legion certificate and works a 15-hour day, says the newsdealers are "ruthless."

"Here, look at this stuff which came in with the regular shipment," he said, indicating seven or eight mid-sized magazines, their covers decked with lurid blonde and screaming banners on sex articles.

"I don't solicit these. They are sent in. And after I send back a shipment or two, there'll be a checker on my neck inquiring why they don't sell."

"I work a long day, and there's a hundred things to do in the store. Do I have time to go through every magazine, comic and pocket book checking them for decency?"

Check Newsdealers

"If a committee from the church could get together with the three newsdealers who service Essex County, maybe they could arrange something. After all, the newsdealers are losing money when the stuff comes back to them."

"The pressure is terrific. I'm not a man who'll sell anything. But I don't want shipments of the stuff magazines to stop. I think arbitration could be reached with the source of the trouble, the newsdealers themselves."

LOEW'S
UNIVERSAL PICTURES
NOW
SPENCER ROBERT TRACY-RYAN
"BAD DAY IN BLACK ROCK"
CINEMAPOSE
Also
"THE GOOD DIE YOUNG"
GLORIA DRANAME

Now - CAPITOL
BELLEVILLE PL. 9-1007
A Quality Western Theatre
Now thru Fri., March 23-24-25
2 Hits in Color
Jose Ferrer - Marie Abaton
"DEEP IN MY HEART"
Also
Linda Darnell - Dan Duryea
"THIS IS MY LOVE"
Kiddie Show Saturday Matinee
March 26
Johnny Weissmuller
"TARZAN ESCAPES"
Also
"TARZAN AND THE APE MAN"
5 Color Cartoons

Saturday Evening thru Tuesday
March 26 - 27 - 28 - 29
Stewart Granger - Grace Kelly
"GREEN FIRE"
CinemaScope - Color
Also
Tony Curtis - Piper Laurie
"SIX BRIDGES TO CROSS"
Wednesday thru Saturday
March 30 - 31 - April 1 - 2
Kirk Douglas - James Mason
in Walt Disney's
"20,000 LEAGUES UNDER THE SEA"
CinemaScope - Color
Also
Anthony Steel - Sheila Sim
"WEST OF ZANZIBAR"

FOR APPOINTMENT PHONE NUTLEY 2-2445
OFFICE HOURS: 9:30 A.M. TO 12 NOON
EVENINGS: 7 TO 9 ON MON., WED. & FRI.

Harold J. Wolff, O.D.
EYE EXAMINATIONS
"FREE PARKING IN REAR"
375 FRANKLIN AVE.
NUTLEY, N. J.
Opposite Post Office

WHY NOT INVEST
with the
NORTH BELLEVILLE SAVINGS & LOAN ASSOCIATION
500 Washington Ave., Belleville (9) N. J.
WE ARE NOW PAYING 3% DIVIDENDS
Savings Insured up to \$10,000
Federal Savings & Loan Insurance Corp.

ALBERT H. BORMANN
PLUMBING HEATING
COMMERCIAL INDUSTRIAL
RESIDENTIAL
45 MERTZ AVE.
PLYMOUTH 9-3247

INCOME TAX RETURNS
PREPARED
In Your Home Or Mine
JOHN D. SIMON
31 Melwex Street
Belleville
For Appointment
Call PL 9-1597 Between 6 and 10 P. M.

NEW!
3-TRANSISTOR ZENITH
"Royal-7"
HEARING AID
★ Operates for only 15¢ a month... on a 15¢ battery!
★ Life-like sound, clear and sweet as ever!
★ The new "A" battery lasts a full month... on a 15¢ battery!
only \$125
(Most Complete Hearing Aid, Made in U.S.A.)
Accepted by the Council on Physical Medicine and Rehabilitation (The American Medical Association)
Surrey County must be filed in order to receive!

Wm. C. Smith
OPTICIAN
334 Washington Ave.
PL 9-6252

Enjoy Your Own Pool
ANOTHER
MORRIS BLUE LAKE POOL
being installed
"The Most Attractive Pool"

- Engineering & design
- Equipment by London, Inc. of Calif.
- Experienced—mobile construction crews
- Pneumatically applied concrete "Gunite"

WITH 25 YEARS EXPERIENCE

Let our engineers compare pools and equipment with you before you buy. Call or write us for our booklet...
"THE TRUTH ABOUT POOLS"
NORRIS BLUE LAKE POOLS
Box 548, Norristown, Pa. Norristown 5-6876
CONVENIENT FINANCING AVAILABLE

MALONE COFFEE SHOP
We Have On Hand A Complete Line Of
Easter Toys And Basket Fixings
Featuring Home Made Milk Chocolate And
Deliciously Different Rainbow Chocolate
PINK YELLOW GREEN PEACH
Rabbits and Baskets
Use Our Lay-Away-Plan
477 Washington Avenue
Belleville 9, N. J.
(Corner Malone Avenue) PL 9-0866

PRIVATE PARKING FACILITIES
An abiding respect for all faiths and fraternal orders, knowledge of rituals and correct procedure enables us to conduct all services in the proper manner regardless of church affiliations. Your choice of appointments may be selected in our own display room.

IRVINE AND SON FUNERAL HOME
276 WASHINGTON AVE., BELLEVILLE, N. J.
Telephone PLYMOUTH 9-1114
Over a Half Century

Extension phones
give you so much...for so little...

new convenience...
you save so many steps so often...answering and calling is easy—your phone is always handy.

welcome privacy...
you make personal or business calls without embarrassment or distraction.

extra security...
you feel safer, especially at night, just knowing there's an extension phone at your bedside.

Easy to order... for your kitchen...bedroom...any room...just call your Telephone Business Office

75¢ A MONTH

NEW JERSEY BELL TELEPHONE COMPANY

KERNAN
Dignified Funeral Service
AVAILABLE TO ALL REGARDLESS OF FINANCIAL CIRCUMSTANCES
NON-SECTARIAN
KIERNAN FUNERAL HOME
GEORGE F. KIERNAN
101 UNION AVE., BELLEVILLE, N.J.
PLYMOUTH 9-3503

For the 2nd straight year
OLDSMOBILE
Presents the Famous
ACADEMY AWARDS SHOW
ON TV AND RADIO
Wednesday
MAR. 30
10:30 P. M.
TV STATION
Channel 4
BELLEVILLE MOTORS
63 Washington Avenue,
Belleville, N. J.
Plymouth 9-4414

Who will win the Oscars?



Photo by Kondrack

CIVIL DEFENSE WORKOUT . . . was presented by the Radio Club of Belleville, Sunday, in a two-way radio communication test via automobiles. Here Ed Clegg and Vera Sherman get the information coming through, as Nicholas Mauncele, civic defense director, looks on. Mauncele spoke to the group before the Club went into its exercise.

PEAK ENROLLMENT AT CAMP MOHICAN

Reservations for Camp Mohican hit a high of 150 in one week, the most ever reached by this date in the Camp's history, according to the Robert Treat Council.

With 454 Scouts already enrolled, the camp is now at 50.4 per cent of its seasonal capacity and many Troops which regularly attend are yet to be heard from. Early registration is urged.

The orientation course for prospective Junior Staff members will be held at the Boys' Club from 1 to 8:30 p.m. April 16. Scouts 16 or over who are interested are urged to apply at once since applications end April 8.

The annual camporee will be held at Treva's Grove, Livingston, on May 20, 21 and 22.

Girls' Swimming Class

Girls will begin April 2 at the The third swimming class for Montclair YWCA at 7 p.m. Fee is \$4.20 and students may register at Red Cross Headquarters, Plymouth 9-4610.

Civil Defense Talk Slated

"Current Problems in Civil Defense" will be discussed by Dr. Morris H. Shamos, professor of Physics and Director of the Nuclear Physics Lab at New York University on Thursday at 8 p.m. at a meeting of the North and West Essex Chamber of Commerce at 56 Broad Street, Bloomfield.

Salesman Moves From Someborn To Kidde

William K. Winstead has been appointed southeastern District Manager of Walter Kidde & Company, Inc. here. His territory covers eleven states with headquarters at 101 Marietta Street, N.W., Atlanta, Georgia.

He was formerly southern sales representative for L. Someborn Sons, Inc. here.

Schwarz A 25-Year Man

Henry Schwarz, of 186 Malone Avenue, completed 25 years with the Long Lines department of American Telephone and Telegraph Company and was presented a gold emblem. He is employed as an equipment maintenance supervisor in New York City.

WEEK'S SCHEDULE AT GRACE CHURCH

Services and activities at Grace Baptist Church follow: Friday, 8 p.m., Men's Club bowling league. Saturday from 2 to 6 p.m., state-wide Junior-Hi Baptist Youth Rally at the Calvary Baptist Church, Clifton.

Sunday, 9:30 a.m., Cherub Choir rehearsal; 9:45, Church school; 10, Pastor's Class in church membership; 11, Morning Worship and Sermon, "New Life Equation." Nursery is provided.

At 5:45 p.m., Church Family Night beginning with buffet luncheon, followed by Interest Groups at 6:15, and General Assembly at 7.

Monday at 8 p.m., Men's Club Bowling League. Also at 8, Goodwill Circle meets with Florence Heffernan as hostess and Adaline Keuch in charge of devotional and program including Love Gift dedication.

Wednesday, 9:45 p.m., Junior Choir rehearsal at the parsonage. Thursday, 8 p.m., Adult Choir rehearsal.

OUR CLASSIFIED SECTION BRINGS QUICK RESULTS

Save During The Great "March Of Values" at...



Acme

SUPER MARKETS

Where Good Living Comes Easy—On Your Pocketbook

Fruits & Vegetables

Broccoli
Fresh Tender Bunch **23¢**

Corn 4 ears **29¢**

Cocoanuts each **10¢**

SPANISH Onions each **5¢**

Potatoes Florida New 3 lbs. **19¢**

Asparagus California Loose lb. **39¢**

FROZEN FOODS

DAIRYCREST

Ice Cream

Half gallon Carton **89¢**

Meltproof Bag Free!

Potatoes 2 9-oz. packages **25¢**
Frozen Just Heat And Serve!

DAIRY FEATURES EXTRA

Sharp Cheese

Pound **69¢**

Velveeta Kraft 8-oz. package **23¢**

BAKED FOODS

Vienna Streussel

Coffee Cake

Virginia Lee SPECIAL! Each **29¢**

Vanilla or Chocolate Cream

Party Layer **59¢**

Bread Supreme 100% Whole Wheat Large Loaf **19¢**

All Prices Effective Thru Sat., March 26

IDEAL Whole Kernel

Corn 12-oz. vacuum pack 16-oz. reg. pack **6** cans **79¢**

IDEAL Tomato

Soup Fancy Condensed **6** 10 1/2-oz. cans **49¢**

IDEAL PRUNE

Juice **6** Quart Bottles **\$1.49**

LOUELLA EVAPORATED

Milk Famous Quality **6** Tall cans **69¢**

FARMDALE

Peas **6** 16-oz. cans **79¢**

IDEAL Fancy Regular or Hot

Catsup **6** 14-oz. bottles **\$1.00**

PRINCESS TOILET

Tissue **6** 1000-Sheet Rolls **59¢**

KEEBLER CLUB

Crackers 16-oz. Package **33¢**

IDEAL Fancy

Applesauce **6** 16-oz. cans **79¢**

Peaches Ideal Old Fash'd Yellow Freestone 1/2's **6** 20-oz. cans **\$1.49**

Tomatoes Standard **6** 16-oz. cans **65¢**

Spaghetti FRANCO AMERICAN **6** 15 3/4-oz. cans **69¢**

Lancaster Brand "U. S. Choice"

Ribs Of Beef **59¢**
Trimmed - Ready for the Oven!
7-Inch Short Cut! lb.

You must agree that here's the finest beef you have ever tasted, or we will cheerfully pay you DOUBLE YOUR MONEY BACK!

Fresh Pork Butts lb. **39¢**
LANCASTER BRAND
Pork Sausage Meat 16-oz. Roll **35¢**

Observed in the best circles...



The extra years enrich its great Bourbon flavor



OLD HICKORY
STRAIGHT BOURBON WHISKY
86 PROOF

ALSO AVAILABLE IN 100 PROOF BOTTLED IN BOND • OLD HICKORY DISTILLING CORPORATION • PHILADELPHIA, PA.

The NEW

Sarasota Terrace

SARASOTA, FLORIDA

Where Summer Spends the Winter

Every day is a fun-filled day of sunny Sarasota! Winter home of the Greatest Show on Earth — Ringling Brothers — Barnum & Bailey Circus, Boston Red Sox spring training, Ringling Museum of Art, jungle gardens, sandy beaches and fabulous fishing. Yes, you will enjoy eventful, exciting Sarasota — day and night!



"Southern Hospitality"

The Sarasota Terrace is the finest on Florida's famous West Coast — swimming pool, shuffleboard courts, excellent dining and cocktail lounge. American and European plan. Guests enjoy privileges of Lido Beach, Bobby Jones golf course, including free transportation to these facilities.

SARASOTA TERRACE, P. O. Box 1720, Phone Ringling 2 0421, SARASOTA, FLA.

335 WASHINGTON AVENUE, BELLEVILLE

THE BELLEVILLE TIMES-NEWS

ADVERTISING, NEWS AND BUSINESS OFFICES
336 WASHINGTON AVENUE

Published every Thursday by The Belleville News Corporation, Belleville, N. J.
Telephone Plymouth 9-3800
RALPH E. HEINZEN, EDITOR AND PUBLISHER
Joseph J. Macozio, News Editor
Mrs. Regina Schneider, Editor

Winter Deed

When snow has covered every boundary line
And changed the shape of bush and rock
And tree
Then only is the whole of this earth mine,
Then only does the earth belong to me.
For who can claim a meadow for his own
Without a single marker now to prove
That yesterday there was a white-washed
stone,
A silver creek which made a border-groove?
Obliterated now by cold and wind
Is all the narrowness I used to claim;
And little deeds I pledged, I now rescind
To take the earth — nor need to sign my
name.

Anobel Armour

Man's Best Friend

A noble dog is man's best friend,
His friend through rain or shine;
On whom he always can depend,
This lovable canine.
It's fun to see him tree a cat,
Then gaze up in the tree,
With front foot lifted up, oh that
Gives quite a thrill to me.
Another thrill to me is when
I see him swim a lake;
Come running from the water, then
Stand on the shore and shake.
Or hear him gnawing on a bone,
Contented with his lot;
Then, dreaming dog dreams, all his own,
About the friends he's got.

A noble dog is friend indeed,
Be he full bred, or mutt;
Caring not where his fortunes lead,
In palace, or in hut.
I love to see him chase a ball,
Or carry in the mail;
But, what thrills me the most of all,
Is, when he wags his tail.

Dedicated to "FLUKY"
May he rest in peace.

M. C. Albey

De Witt's Building

Congratulations to the De Witt Savings
and Loan Association for moving into its
new home.
On Saturday, its opening day, it seemed
all of Belleville at one time or another passed
through the modern building's portals.
With a drive-in teller's window, and a
walk-up teller's window for those with baby
carriages, De Witt has gone all out to give
its clients comfort and convenience.

J. J. H.

Milk Bar

It appears that a milk bar, approved by
the zoning board for 538 Jerusalem Street,
will not get the sanction of the Town Com-
mission. Several commissioners already

School Happenings

Cheerleading

A meeting of the Co-curricular Activities Workshop was held with Michael Kosmala, coordinator of activities at the high school in charge.
The purpose was to decide how to select next year's cheerleaders. Miss Ida Thomson, physical education instructor, emphasized last year's qualifying standards, and reiterated past procedures of selection. It was decided to publicize the method of selection through the play of classes. A selection committee was set up. Cheerleading practice and tryouts will begin by Tuesday, March 22. Final results should be known by Monday, April 1. There will be eight cheerleaders chosen.

Graduate Homage

Hugh D. Kittle, principal of the high school has received a letter from Dr. William J. Farise, associate dean of Stevens Institute of Technology, explaining that Robert Kwik, graduate of Belleville High in 1935, "distinguished himself" that his name has been posted on the Dean's List.

Belleville High School Students distributed over \$700.00 to the March of Dimes. A Mrs. A. M. Gray's homeroom led with \$45.46. And Mr. Henry Miller's room was second with \$42.80.

Berkley

Mrs. Edythe Chivovaru, a rep-

have indicated informally they are against it.
Without going into the merits of the case, either by the applicant for the variance or by residents in the area opposing the move, it seems to us there's plenty of places in town now where people can buy milk and ice cream.
J. J. H.

High School Facilities

Residents with school age children or residents interested in the school system may find particularly readable a series of articles being published weekly on the high school evaluation report.

In it, Earl Master, a Pennsylvania high school principal and survey head, goes through the strong and weak points of the school, making criticisms, and recommendations.

Without going into the specifics of the report at this time, we've already said there's something lacking — there's one phase of the report which is repeated time and time again — restricted physical facilities — next to the junior high school approach to education it's the best argument the school board could have in its proposal for the new high school.

At the risk of quoting out of context, the report says, under different sections: "The committee recognizes again the handicap placed upon the school's program by restricted physical facilities."

Again — "Physical facilities constitute another deterrent to a really strong music program."

Again — "there are some limiting factors in the physical facilities provided."

And — "once again, the committee must comment upon the urgent need to correct the inadequacies of the physical plant."

And — "need a physical area adopted to their functions."

Again — "girls' physical activities are limited by space, time and facilities."

And — "despite limitations of space and facilities"

J. J. H.

Curbing The Merchants-Of-Smut

To cap the campaign being waged here and across the state, by church forces interested in protecting our youth against obscene books and magazines, as well as horror or terror-ridden "comic books", the New Jersey State Legislature is sitting impassively on legislation intended to render the distribution of the objectionable literature more difficult.

Meanwhile, the Assembly in Albany approved unanimously a bill offered as New York State's major weapon against smut-and-crime books. The bill would outlaw books and magazines dealing with sex, crime, horror and brutality and ban their sale to anyone under 15 years of age. Violations would be a misdemeanor punishable by a \$500 fine, a year in prison or both.

New Jersey should be no less intent upon protecting our juveniles. The campaign in Nutley by parents of St. Mary's and Holy Family churches has already paid off, handsomely. A check on that town's newsstands this week showed only two dealers still displaying smut literature. The next step is to reach the distributors and the publishers of such obscene publications. That is in the realm of the State Legislature. Let your State Senator and Assemblymen know that you want the same protection by law, for your children, that New York State has given.

R. E. H.

INDUSTRY CHAMBER ASKS INVENTIONS

Milton Gilbert, patent attorney and chairman of the New Products Committee-Industrial Chamber of Commerce-North and West Essex announced this week that the Committee will begin advertising inventions. The New Products Committee, comprised of owners of small plants, advertising and marketing men, engineers and others has been selected by the Industrial Chamber for manufacture and distribution to the more than 100 plants served by the Industrial Chamber in the 14 communities in North and West Essex.

Members of the Committee will serve on a voluntary basis and there will be no fees charged the inventor for advice and guidance given. Gilbert said that no ideas or inventions will be considered before the inventor has taken certain pre-arranged steps which the Committee requires. These steps are described in a brochure which will be provided through a request in writing mailed to the Industrial Chamber of Commerce, Bloomfield.

Director. Arrangements are now being completed for members of the State Vocation Committee to spend next Friday in the high school visiting with Hensinger and Gilbert and observing the activities. Persons selected by the Association to visit Belleville High School are: Miss Mary Howell, Verona High School; Carl Johnson, Orange High School; and Miss Claire Holland, Montclair High School.

One Man's Opinion

There Were No Secret Details At Yalta, But The West's Concessions To Stalin Were Catastrophic In Consequences

By Ralph E. Heinzen

The Yalta papers released last week revealed no still undisclosed "secret deals" and, in fact, disclosed nothing that was not known about the unfortunate agreements except the chatter of the three statesmen as they sat around a table and carved up Manchuria, Japan, Germany and Poland to make the empire over which the red flag of the Kremlin waves today. From their small talk, it is obvious that President Roosevelt and Prime Minister Churchill were taken over the hurdles by Joe Stalin who won a major war in Asia without engaging a single soldier and, as far as Germany and Poland are concerned, ate his cake and yet still had it.

There is nothing in the Yalta papers which was not exposed, in 1950, in his book "I Was There", by Fleet Admiral William D. Leahy, who sat at Roosevelt's side at Yalta and bitterly but unsuccessfully to curb the West's generosity to Stalin. On the basis of the evidence, it is evident that President Roosevelt had been gravely misled by his own Army advisors as to Japan's strength and its ability to carry on a long war. The Navy and the Air Force had told Roosevelt that Japan was "softening", the Army said it would cost a million men to land.

In this "One Man's Opinion," the seeds of World War III were sown at Yalta.

With our consent, at Yalta and subsequently at Potsdam, Russia established herself as an occupant of Germany, Austria and Hungary and under the political agreements which enabled Moscow to foist Communist regimes on Poland and Czechoslovakia, she moved into Warsaw and Prague. She already had forced herself on Finland and has absorbed Latvia, Lithuania and Estonia.

In the Far East, she re-established positions lost 50 years before in the Russo-Japanese war when, in the peace treaty signed at Portsmouth, N. H., under the watchful eye of "Teddy" Roosevelt, she surrendered her Eastern empire defenses to Tokyo. With our consent at Yalta she took over Sakhalin, the Kuriles and obtained a warm-water port at Dairen.

Driven From Iran
Except for Iran where the new United Nations sitting at Hunter College, forced Russia to move her troops out of Iran where they were allegedly "protecting" vital oil routes over which wartime oil and other supplies had been delivered to the United States. The Communists have never budged from the positions they won over the conference table at Yalta.

There are no signs of Russian intention to move out of Germany, Austria or Hungary. The Red Army will stay there as long as its order, certainly, we are not going to evacuate West Germany and leave a Red Army in East Germany. Nor are there any signs of free elections in Poland or Czechoslovakia which, in the words of the Yalta agreement, must be "as pure as Caesar's wife."

There To Stay
It is this "One Man's Opinion" that the Red Army will evacuate Germany, Austria and Hungary when they are driven out by force. With strong positions to force us to split our own strength and resources on two fronts in Europe and in the Far East, exactly as in World War II, Russia could be forced out only by a major military operation.

That could mean only a major war, World War III, the step-child of Yalta. The concessions made there which greatly exceed in historical importance the concessions which the French and British made at Munich to Adolf Hitler. Comparably, the Munich concessions were minor concessions which they sacrificed, directly, but one nation — Czechoslovakia.

Second sight has proven that the concessions made at Yalta to Stalin to obtain Russia's entry in the war against Japan were completely unnecessary. Japan's hold on the Asiatic mainland was of no consequence whatsoever in determining the outcome of the war. It was clear long before Yalta, that we could air-bomb Japan into submission. That was before the atomic bomb was ready for use.

Red Army Useless
The Red Army in Europe would have had to be transported over the over-crowded Trans-Siberian Railroad to the Far East. Russia had too little oil and motor fuel to operate any other way. Russia had no warships, no submarines and far too few planes. She could have contributed nothing to the war in the East which was a mobile war, waged by ships, planes and fast-moving amphibious troops.

Yet, at Yalta, Roosevelt agreed that if the Soviet Union would enter the war against Japan with us, we would give up Sakhalin Island and the Kuriles.

The port of Dairen would be internationalized and the Soviet lease on Port Arthur restored. China was to retain full sovereignty over Manchuria but Russia would share jointly in the Chinese Eastern and South Manchurian railroads.

Protection Man's Confidence in Insurance
PERROTIA AGENCY
INSURANCE ADVISORS
26 Washington Ave. Nutley, N.J. 2-5447

Letters To The Editor

Democratic Chairman Writes — New High School; Police Patrol; Demo Rift; Refrigerator

Editor, Belleville Times-News:

May I take this opportunity to clarify the record in reference to certain unfortunate and irresponsible statements made in a letter to you from Mr. Philip A. Newsome?

I have been a member of the Democratic County Committee in Belleville since 1939 and I consider myself just as loyal a Democrat as anyone here has met in the party. Unfortunately, Mr. Newsome is resentful because he is not receiving the regular party designation in the primary election, April 29th. It is the practice and tradition of both parties that designations for more than 1,100 members of the county committee be decided by the duly elected executive leaders of the party.

"Unfair and Untrue"

In making unfair and untrue accusations of "conceiving" because he did not get the "regular" Democratic label, Mr. Newsome is doing a disservice to the party for which he professes such tremendous loyalty.

This is the same Mr. Newsome whom the Democratic Party honored by naming him to the county committee without a contest two years ago, although he had suffered defeat in his previous attempt.

I consider it unfortunate that he is involving me in a personal controversy simply because the party has not seen fit to let him have his own way in every respect.

As far as the 1954 election is concerned, I suppose Mr. Newsome is referring to the Town Commission election. By my knowledge, Messrs. Sullivan, Padula and Grahm were members of the Democratic party who were commission candidates. It should be remembered, however, that commission elections are set by the parties.

Nonetheless, it is a matter of record that I told my Democratic friends and a county committee members that I wanted them to remember the faithful service to our party of these three men, all of whom I thought were capable of outstanding service to us as commissioners.

"Team" Victory

In answer to Mr. Crusio, I am very happy to have contributed some measure to the election of Mayor Padula. I do not pretend to be a politician.

In a preliminary conference of the British and United States diplomatic representatives on February 1, Sir Anthony Eden spoke up against conceding the Russian ultimatum.

"In his view," the Yalta minutes read, "if the Russians decided to enter the war against Japan, it would be a disaster because they considered it in their interests that the Japanese should be completely isolated." The Yalta minutes are fully finished off by the United States and Great Britain alone.

"There was therefore no need for us to offer a high price for the participation, and if we were prepared to agree to their territorial demands in the Far East, we should see to it that we obtained a good return in respect of the points on which we required concessions from them."

Poor Diplomacy

A paper prepared beforehand by the State Department Division of Territorial Studies also warned against over-generosity in the specific case of the southern Kurile Islands, although it appears that Roosevelt and Stettinius may never have seen it.

The paper said an argument could be made for assigning the northern and central Kuriles to the Soviet Union under a United Nations trusteeship.

"There would seem, however, to be few factors which would justify a Soviet claim to the southern islands," it read. "This transfer would create a situation which a future Japan would find difficult to accept as a permanent solution."

"It would deprive Japan of islands which are historically and ethnically Japanese and of waters which are valuable for fishing. If the southern islands should be fortified, they would be a continuing menace to Japan."

Stalin Drives Hard Bargain

The Yalta minutes suggest, however, that Roosevelt was not in a lagging mood when he met with Stalin on February 8.

"The President said he felt that there would be no difficulty whatsoever in regard to the southern half of Sakhalin and the Kurile Islands going to Russia at the end of the war."

On Dairen and the Manchurian railroads he wanted to consult Chang Kai-shek before committing himself.

"Marshal Stalin said that it is clear that if the Soviet Union is not met it would be difficult for him and Molotov to explain to the Soviet people why the war was entering the war against Japan. They understood the war against Germany, which had threatened the very existence of the Soviet Union, but they could not understand why Russia would enter the war against Japan with which they had no trouble."

Stalin's will prevailed, although

stand to be completely responsible for any election victory, inasmuch as I am only one man on the "team" of these subjects. Nevertheless, I must point out that I and others with long service on the Belleville Democratic Committee remained active and loyal in the years when county committee members and other party workers were pretty hard to find. I do not think we need to apologize to anyone in this respect.

Mr. Newsome says that if he is victorious in his district contest, he will challenge me at the meeting of the committee to prove my fitness as town chairman. Under our democratic process he is entitled to do so and he may be assured that the floor will be open to him.

In his record or how it should be, I trust he will take into consideration the progress of the Democratic Party in Belleville in recent years, under a majority of the present leaders. If he can tell us how much to improve our political situation, I can assure Mr. Newsome that we will be listening with open minds.

"Incomprehensible"

As for rumors that a certain town commissioner sought the town chairmanship, Mr. Newsome, in view of his self-assured knowledge of politics, should know that I am aware of the incongruity of a commissioner also holding the town chairmanship. It is a headache that all commissioners, in Belleville or other places, traditionally have shunned.

Mr. Newsome concludes by saying he would be glad to work for such a commissioner. As a matter of fact, he has been doing so since 1941, I must point out that Mr. Newsome DOES work for that commissioner and is paid a regular SALARY or WAGE for what ever work he does.

Sincerely,
RALPH A. VARA
Town Democratic Chairman

Town Going to Dogs

Editor, Belleville Times-News:

I have gotten in touch with the Health Officers and Commissioners with respect to the dog situation in this part of town. It has run a little too far and nothing is being done about it.

I cut this clipping out of the Newark Evening News (clipping deals with theory that common cold may be related to dog distemper virus, and that it is a good reason why the so-called dog lovers should keep their dogs from roaming around loose).

Because it is Lent, I like to visit church, but I have a fear of my life state the dog jump on me. If I scream, the owners tell me "they won't bite" and I asked one of the owners what they had teeth for.

(Continued On Page 4, 2nd Section)

and SUPPORT

THE

CROSS

Space taken by PUBLIC SERVICE



OPEN LATE
Thursday to 9 p.m.
Friday to 10 p.m.
SATURDAY 8 A.M. TO 6 P.M.

CALIFORNIA
Fresh Broccoli large original bunch **23¢**
INDIAN RIVER — Seedless
Florida Grapefruit 4 for **25¢**
FRESH — Crisp
Iceberg Lettuce large solid head **10¢**
RED RIPE
Slicing Tomatoes 4-5 per ctn. **17¢**

Smart Gardeners Make Food Fair Their First Stop!
 Visit our Garden Department for an excellent selection of hardy field-grown bushes, flowering shrubs. See our large selection of tools and garden equipment all reasonably priced.

SELECTED GARDEN FRESH FRUITS and VEGETABLES
 At Food Fair you'll find Fruits and Vegetables at the peak of perfection... delivered daily under refrigeration... carefully and tenderly washed (when necessary) for your added convenience... kept fresh for your selection by sanitary, flavor-saving flake ice... guaranteed to satisfy.

HEALTHY GREEN POTTED
Philodendron 3 for \$1.00 ea. **35¢**
HEALTHY GOLDEN
Fresh Daffodils 2 doz. **35¢**

Choose From Food Fair Dairy Variety For All Your Lenten Needs...

MAYFAIR — Natural
Swiss Slices 8 oz. pkg. **39¢**
 Mayfair Cheese Food Kraft Cheez Whiz 8 oz. jar **27¢** 16 oz. jar **49¢**
 Mayfair Cheese Slices Amer. Swiss 8 oz. pkg. **29¢**
 Axelrod Cream Cheese 8 oz. plastic cont. **27¢**
 Golden Gift Orange Juice qt. ctn. **30¢**

Food Fair Eggs are Checked and Double Checked
 Every egg sold in our Dairy Fair is guaranteed... each egg is carefully checked for quality in our own candling (inspection) rooms and double checked at the store by a specially designed candling light... they must be "right" to bear the Food Fair Label.

FROZEN FOODS SAVINGS
SNOW FLAKE — Frozen
French Fries 2 pkgs. **27¢**
PICTSWEEP — Frozen
Broccoli Spears 2 10 oz. pkgs. **45¢**

Star-Kist Tuna Pies
1/2 PRICE SALE
2 pies for 39¢
 1 Pie in One Box One at Regular Price One at 1/2 Price — Total 39¢

SENSATIONAL VALUE!
 From Disneyland
WALT DISNEY'S BALLAD OF DAVY CROCKETT
 Today's Most Popular Children's Record
 78 RPM Unbreakable **25¢**
 Hurry! Limited Quantities!

IN OUR FRESH SEAFOODS DEPT.
GOLDEN FRIED — Just Heat and Eat
FISH STICKS lb. **39¢**
 • NO WORK
 • NO WASTE
 • NO ODOR

TO PREPARE:
 1. Place fishsticks on shallow pan or cookie sheet.
 2. Heat in broiler or oven which ever you prefer. ("Broiler" will make fishsticks slightly crispier.") FOR BROILER: Pre-heat for 10 minutes, place pan of fishsticks at least 4 inches below heat. Allow 8-10 minutes. FOR OVEN: Pre-heat oven to 425°F. Place pan of fishsticks inside. Allow 10-12 minutes.
 3. Serve immediately, season with Tartar, Hollandaise or Chili Sauce for a delicious, nutritious dinner dish.
 — ANOTHER FOOD FAIR TASTE TREAT

DELICATESSEN SAVINGS
HYGRADES — Piece or Midget
Liverwurst lb. **49¢**
 Kitchen Fresh Cole Slaw lb. cont. **33¢**
 Kitchen Fresh Fish Cakes pkg. of 4 **29¢**



JOHNSON'S WAXES
Glo Coat 1/2 Extra pt. can **59¢**
Glo Coat With 1/3 EXTRA — FREE qt. can **99¢**
Pride with free pt. tube of "BLEM" bot. **1.39**
Jubilee Kitchen Wax pt. bot. **59¢**
Jonny Mop assorted colors ea. **98¢**
Jonny Mop Refills " 29¢
ACE
Household Brooms sturdy all cprn ea. **1.25**
Mop Heads " 35¢
HAWTHORNE
Clothesline 50 feet braided " 59¢
Azalea Braided 100 feet 1.09

Libby's Tomato Juice 46 oz. can **25¢**
Mott's Apple Juice 2 qt. bot. **39¢**
Miracle Whip Salad Dressing 16 oz. jar **29¢**
Heart's Delight Peaches Freestone Halves 16 oz. can **19¢**
Del Monte Cream Style Golden Corn 2 17 oz. cans **27¢**
White Meat Tuna FRE-MAR SOLID PACK 7 oz. can **31¢**
Broadcast Corned Beef Hash 2 1lb. cans **49¢**
Pride of the Farm Catsup 14 oz. bot. **16¢**
Saran Wrap 25 ft. roll **27¢**
Sunshine Hi-Ho Crackers lb. pkg. **31¢**

Angus All-Purpose Cloths pkg. of 2 **29¢**
 KINGAN SLICED DRY BEEF 2 1/2 qt. jar **29¢**
 COCOA MARSH CHOCOLATE SYRUP 1b. jar **30¢**
 FLORIENT DEODORANT 5 1/2 oz. bomb **79¢**
 STRATFORD FARMS GRAPE PRESERVES Whole, Seedless 8 oz. dth **25¢**



EASTER CANDIES
 We carry a complete variety of Easter Candy Needs for your Easter giving. Shop Food Fair for all your Easter candy needs!
 Fyne-Taste Jelly Eggs Assorted 12 1/2 oz. bag **19¢** 1 1/2 lb. bag **35¢**
 Fyne-Taste Marshmallow Eggs Panned 14 oz. bag **29¢**
 Choc. Covered Decorated Eggs Filled 1/2 lb. box **25¢**
 Choc. Covered Coconut Eggs 6 1/4 pgs. **25¢**
 Choc. Covered Fruits & Nut Eggs 6 1/4 pgs. **25¢**
 Choc. Marshmallow Rabbits Lewis' 5 oz. pkg. **19¢**

We carry a complete line of PASS-OVER Needs for the Holidays, including a Complete Variety of Fresh Water Fish!

PSG* TOP QUALITY MEAT — ALWAYS YOUR BEST MEAT BUY
PSG* TOP QUALITY — U.S. GOV'T GRADED "CHOICE" — TOP OR BOTTOM
ROUND ROAST
or Cross-rib Roast
BONELESS — NO FAT ADDED
69¢ lb.
 ALL FOOD FAIR BEEF IS STRICTLY U.S. CHOICE GOVERNMENT GRADED AND INSPECTED — PROTECTED, SELECTED, GUARANTEED



SALE!
Simoniz Wax
 Dark or Blond
Hi-Lite Polish 8 oz. bot. **79¢**
Non-Scuff Floor Wax pt. can **59¢**
Non-Scuff Floor Wax qt. can **98¢** 1/2 gal. **1.63**
 WITH FREE SEEDS
Wilbert's "NO-RUB" FLOOR WAX 54 OFF SALE pt. can **39¢**
Wilbert's "NO-RUB" FLOOR WAX 104 OFF SALE qt. can **69¢**
Wilbert's "NO-RUB" Glass Wax pt. can **35¢**

U-BET Chocolate Syrup lb. jar **29¢**
DASH DOG FOOD 3 1lb. cans **43¢**
SWEETHEART SOAP 1c SALE Reg. Size 4 comb. **26¢** 4 comb. **36¢**
"One-Wipe" Dust Cloth ea. **69¢**
DAN-DEE Plastic Floor Polish qt. bot. **79¢**
GOTTSCALK'S Metal Sponge 3-in-1 pack **19¢**
"COPS" Copper Cleaner pkg **39¢**
Bon Ami Cleanser 2 12 oz. cans **23¢**
Bleachette Blue 2 pkgs. **15¢**

545 Washington Ave., Belleville

We Reserve the Right to Limit Quantities — None Sold to Dealers
 Grocery Prices Effective March 24 thru March 30. All other prices March 24, 25 and 26 only

LETTERS To The Editor

(Continued From Editorial Page)

Something should be done. I step outside my door and almost break my neck over bones. I have become a scavenger for these "dog lovers".

Mrs. Anna Liebke
69 Clear Avenue

Congratulations De Witt Editor, Belleville Times-News

Dear Sir:

We had the opportunity of being conducted through the new quarters of the De Witt Savings and Loan Association at Washington and Tappan Avenues.

This was a revealing experience; for here was a brilliantly conceived building and beautifully executed. Every possible modern convenience has been incorporated into its construction. We believe its presence should give a real "lift" to the whole business district, and encourage others to follow, with faith in Belleville's development.

The officers and directors of the De Witt Savings and Loan Association are to be congratulated on their forward spirit.

Dr. and Mrs. George Kaden

Democrat Patronage

Editor, Belleville Times-News:

The observations of Mr. Phillip A. Newsome, who describes himself as a Good Regular Democrat, are most revealing. If not alarming. His letter indeed brings out not only evidence of dissension within the ranks of the Democratic Party, but indications of strong dissatisfaction over the quality of leadership of those presently at the helm.

While Mr. Newsome seems vague on some of his indicated inferences, it is obvious that the loss of the Belleville Motor Vehicle agency patronage to an out of town Democrat ranked and irritated Mr. Newsome. He implies Mr. Vana engineered this designation without consultation with his fellow Democrats.

Press releases issued from Trenton indicated that Mr. Sweeney, a Bloomfield democrat, was replacing Mr. Maglione, a republican, which would be consistent with customary party policy. If this was the case, the question might be in order: How or why Mr. Vana, as Democratic town chairman, certified the appointment of one of the opposition party? If, too, might explain why the county committee was bypassed as Mr. Newsome complains.

The selection of a Democrat from another community for one of the patronage "plums" of the party would tend to indicate either a lack of confidence in the leadership or dissatisfaction over the conduct of the affairs within the local organization by the County and State Party big-wigs.

When have Mayor Padula and Comm. Sullivan been while all this distribution of the patronage pie has been going on? Surely there are a few deserving democrats in Belleville who would have welcomed a nice "juicy" job.

James R. Golden

Wants More Night Men

Editor, Belleville Times-News:

Newark, our neighbor, has taken the initiative in combating the problem of muggings, robberies, by adding additional men to the police force.

Subsequently Belleville will be the town most likely to succumb to the tyranny of these monsters. Now that the tax rate in Belleville has been increased, there is absolutely no reason to say that the addition of more men to the police force will have an effect upon the taxes.

We live more in the evening hours, to patrol the area in the police cars as well as on foot patrol. We should not tolerate the fact that on some evenings, during the most important hours from 8 p.m. to 5 a.m., we only have four or five men patrolling the area which takes in all of Belleville.

Any reasonable person knows that four or five men cannot possibly protect approximately 30,000 people.

The Belleville Times-News should recognize this as a reason for fight, through its editorials. This is the type of thing for the Times to take as an incentive in fighting for something which is good.

The Newark Star-Ledger recently had an editorial which concerned itself primarily with the aforementioned problem. On a paragraph from the editorial which sums up the reason we need these additional men on patrol follows:

"We need them in squad cars, we need them on foot. Apparently it takes the sight of a night-stick and a police shield to make these hoodlums hold back."

I wonder whether or not the editor of this newspaper, Belleville Times, will agree with me if I say that this is the problem which the newspaper can successfully combat.

I am well aware of the fact that the editor of the Belleville Times is a crusader and he will write a good editorial on the subject of more police protection in Belleville; or does the editor feel that this is not a reasonable subject upon which to write an editorial?

Thomas Sciaraffo
85 Lake Street

busy with Spring housecleaning? come to A&P, where it's easy to

save on all your food and household needs

National Salmon Week Values!

Sunnybrook - Red Salmon 7 1/2 oz. can 35c 16 oz. can 63c

Chinook Salmon ASP brand 7 1/2 oz. can 49c Columbia River 7 1/2 oz. can 47c

Point Bee Salmon Blue Back 7 1/2 oz. can 41c

Key Bumble Red Salmon 7 1/2 oz. can 47c

McGowan Salmon Medium Red 2 3 1/2 oz. cans 45c

McGowan Chinook Salmon 7 1/2 oz. can 47c

Perfect Strike Chum Salmon 7 1/2 oz. can 23c

Some Strike Salmon Medium Red 7 1/2 oz. can 35c



"Super-Right" Quality—Whole or Either Half

LEGS OF LAMB

Oven-Ready In Self-Service Meat Departments lb. 59c Regular Style lb. 53c

A tasty treat with Roast Lamb. Mint Jelly, Apr. 12 oz. 17c

ROUND POT ROAST Boneless (No Fat Added) lb. 75c

Top Sirloin Roast or Steak lb. 75c Top Round Roast or Steak lb. 75c

Some cuts of the above items are often called "Sandwich Steaks" "Boneless Sirloin" "Saratoga" or "Minute Steaks" etc., and sold for much higher prices elsewhere, but at A&P they're all sold as Top Sirloin and Top Round Cuts at one price! — 75c per lb. As advertised!

Other Lenten Values!

Portuguese Sardines Boneless Skinless 2 3 1/2 oz. cans 47c

Maine Sardines Various brands 3 4 oz. cans 22c

Underwood Sardines Red Devil Mustard 2 3 1/2 oz. cans 23c

White Meat Tuna Fish ASP brand 7 oz. can 33c

Light Meat Tuna Fish Sultana brand 7 oz. can 27c

Minced Clams Blue Point 10 1/2 oz. can 29c

Shoulder Lamb Chops "All cuts" lb. 65c

Rib Lamb Chops Short cut — less waste lb. 69c

Loin Lamb Chops lb. 89c

Sirloin Steaks Juicy, flavorful lb. 79c

Porterhouse Steaks Juicy, flavorful lb. 63c

Ground Beef Freshly ground lb. 39c

Boneless Veal Roast Shoulder lb. 49c

Loin Veal Chops lb. 79c

Rib Veal Chops Short cut — less waste lb. 65c

Smoked Hams Shank portion 35c Butt portion 45c

Smoked Hams Whole or either half lb. 53c

Hams Ready-to-Eat Shank portion 39c Butt portion 49c

Ready-to-Eat Hams Whole or either half lb. 55c

Sliced Bacon Full cut 1/2 lb. pkg. 29c

Chickens Broiling and frying — ready-to-cook lb. 57c

Turkeys Sides under 3 lbs. 18 lbs. lb. 49c Sides 4 to 16 lbs. 59c

Fancy Shrimp Medium size lb. 69c

Fresh Flounder Fillet lb. 79c

SO FRESH, SO GOOD, SO THRIFTY!

Jane Parker GOLD or MARBLE Pound Cake 49c

Jane Parker Hot Cross Buns 10 for 29c

JANE PARKER PROTEIN BREAD 12 oz. loaf 23c

Florida - Valencia ORANGES

Now 5 lb. bag 35c

Yellow Bananas Golden ripe 2 lb. 29c

Delicious Apples Small — Washington 2 lb. 29c

Mushrooms Snow white lb. 49c

Pascal Celery Extra large stalk 29c

Cauliflower Western head 35c

Broccoli Fresh — Western Farm bunch 25c

Carrots Fresh Western Farm 2 lb. cello bag 17c

Iceberg Lettuce Western large head 17c

Grapefruit Seedless — White or Pink 5 lb. bag 35c

Sweet Yellow Corn Florida farms 4 ears 29c

Fresh Tomatoes Red ripe carton 23c

Rome Beauty Apples Eastern All purpose 3 lb. 29c

Grass Seed For spring planting 5 lb. bag 1.89

A&P's Premium Quality Coffee

Eight O'Clock Mild and Mellow 1 lb. 79c

Red Circle Rich and Full-Bodied 1 lb. 83c

Bokar Vigorous and Winery 1 lb. 85c

A&P Packed Coffee Percolator or Drip 1 lb. 89c

DAIRY VALUES!

Fancy Wisconsin — Sliced or Piece Muenster Cheese lb. 43c

Fresh White Eggs Sunnybrook brand Large, grade A 1 doz. 61c

Large Eggs Wildma — Brown and White 1 doz. 57c

Whipped Butter Sunswell Salt or unsalt 8 cup 41c

Borden's Spreads Relish, Pimento, Olive-Pimento 2 5 oz. jars 45c

Mel-O-Bit American Process cheese lb. 49c

FROZEN FOOD VALUES!

Libby's — Chopped Broccoli Ready to Heat and Serve 2 10 oz. pkgs. 33c

Campbell's Pea Soup With Ham 10 1/2 oz. cans 19c

Beardsley's Codfish Cakes 8 oz. can 35c

Swanson's Pot Pies Chicken 8 oz. can 25c

Cod Fillet Cap'n John's 16 oz. can 29c

French Fried Scallops Red Librand 7 oz. pkg. 55c

Spring Cleaning Needs!

Windex For cleaning windows 6 oz. bottle 20c 16 oz. bottle 35c

Sturdy Brooms Various brands No. 6 95c No. 5 75c

Borax Powdered hand soap 8 oz. can 17c

Johnson's Jubilee Kitchen Wax 16 oz. can 59c

Spig & Span For cleaning painted surfaces 16 oz. can 25c

Bright Sail Ammonia Clear or Cloudy 2 bottles 21c

20 Mule Team Borax 1 lb. 19c 2 lb. 35c

Oakite 12 oz. can 23c 24 oz. can 31c

Brano 12 oz. can 23c Sani Flush 20 oz. can 23c

SPECIALS FOR THIS WEEK!

TOMATO JUICE A&P Our Finest 4 18 oz. cans 43c 2 48 oz. cans 43c

Corn Whole Kernel or Cream Style 4 16 oz. cans 43c Golden — A&P Brand

Sauerkraut A&P Brand 4 27 oz. cans 43c

Grape Juice Welch's 2 24 oz. bottles 65c

Bosco 2 12 oz. jars 59c 24 oz. jar 53c

CRACKERS Nabisco, Spotted, Unsalted 16 oz. jar 23c

Hi-Ho CRACKERS Sunshine 16 oz. jar 32c

AP Super Markets

THE GREAT ATLANTIC & PACIFIC TEA COMPANY

Prices effective thru Sat., March 26th, in Super Markets and Self-Service stores only.

MORE GROCERY VALUES!

Grispo Crest Assortment 10 oz. pkg. 27c

Nedick's Orange Drink 6 7 oz. bottles 37c

Cream of Rice Cereal 18 oz. can 33c

Hartley's Orange Marmalade 16 oz. jar 23c

Jordan Almonds Sugared or Chocolate covered — Bazaar brand small 150 pkg. 39c

Paas Egg Dyes small 150 pkg. 39c

Hudson Paper Towels 150 sheets 37c

Wearover Aluminum Wrap 25 ft. roll 25c

Kent Cigarettes Filter tip King size carton 10 pkgs. 2.71

Flako Pie Crust Mix 2 10 oz. pkgs. 35c

Blue Bonnet Margarine 16 1/4 lb. prints 90c

Lux Liquid Detergent 12 oz. can 39c 22 oz. can 69c

Surf Combination offer — buy 1 at regular price, get 1 at half price 2 large 45c

Silver Dust White soap granules large 31c giant 62c

Breeze All purpose detergent large 31c giant 62c

Rinco White soap granules For the family wash and dishes large 30c giant 60c

Bon Ami Cleanser 2 12 oz. cans 23c

Bab-O Cleanser With 2c off label 2 14 oz. cans 19c With 3c off label 2 14 oz. cans 13c



685 GROCERY PRICES REDUCED SINCE JAN. 1st

Listed here are a few...

Cling Peaches Diet Delight, halves 2 16 oz. cans 47c

Mott's Applesauce Dietetic 2 8 1/2 oz. cans 19c

Grape Spread Louis Sherry — Dietetic 8 oz. glass 27c

Cut Green Beans Blue Boy Dietetic 2 8 oz. cans 23c

Green Peas Blue Boy — dietetic 2 8 oz. cans 23c

Peas & Carrots Blue Boy — dietetic 2 8 oz. cans 23c

Green Lima Beans ASP brand 2 16 oz. cans 37c

Libby's Carrots & Peas 2 17 oz. cans 39c

Libby's Cut String Beans 3 32c

Sweet Peas Reliable brand 8 1/2 oz. cans 29c

Libby's Sweet Peas Fancy 17 oz. cans 37c

Tomatoes Del Monte or Libby's peeled 2 16 oz. cans 43c

Lord Mott's Carrots French style 2 16 oz. cans 23c

Greenwood's Beets 2 16 oz. cans 31c

Greenwood's Red Cabbage 2 16 oz. cans 31c

Broadcast Corned Beef Hash 16 oz. can 27c

Tomato Catsup Del Monte or Price of Farm 16 oz. bottle 18c

Del Monte Chili Sauce 16 oz. bottle 23c

Mayonnaise Heinz brand 16 oz. jar 41c

One Pound Blueberries 2 16 oz. cans 27c

Comstock Pie Apples ASP brand 16 oz. can 25c

Grapefruit Sections ASP brand 16 oz. can 29c

Sweet Cherries Del Monte Dark or Light 17 oz. glass 25c

Libby's Fruit Cocktail 2 29c

Del Monte Fruit Salad 2 29c

Freestone Peaches Heart's Delight 17 oz. glass 33c

Libby's Freestone Peaches 2 25c

Pineapple Juice Dole, Del Monte or Libby's 2 16 oz. cans 23c

Libby's Ripe Olives Family size 4 16 oz. cans 15c

B in B Chopped Mushrooms 2 16 oz. cans 25c

Brandywine Sliced Mushrooms 2 16 oz. cans 20c

Larson's Veg-All Mixed vegetables 2 8 oz. cans 19c

Nucoa Margarine 16 1/4 lb. prints 29c

Heinz Soups Cream of Green Pea, Vegetable, Vegetarian 2 cans 25c

Campbell's Soups 2 cans 25c

Asparagus, Bean with Bacon, Cream of Celery, Pea, Pepper Pot, Veg.

FRIED CHICKEN

Perfect partner for CHICKEN

OCEAN SPRAY CRANBERRY SAUCE

July or Wholeberry 16 oz. can 19c

Ronzoni Spaghetti, Spaghettini, Mezzani 2 16 oz. pkgs. 39c

Spaghetti Sauce Chef Boy-Ar-Dee With Mushrooms 2 8 oz. cans 27c

EAST NUTLEY GARAGE

C. A. FANELLI, Prop.

Body and Fender Repairing

Expert Auto Restoring

Phone: NU/ev 2-6666

66 Washington Avenue, Nutley, N. J.

A & P's Newest Supermarket - 333 Franklin Ave. - Near Joralemon St. - Plenty of Free Parking Space

Another Nearby A & P Supermarket at 169 Washington Ave. - Opp. Town Hall

Open Thursday and Friday Evenings to 9 P.M.